

Greater China Headquarters

NANJING JINGZE LIGHTING TECHNOLOGY CO., LTD

Address: 58 Hengguang Rd, Nanjing Economic
Technological Development Zone, CHINA

Post Code: 210000

Tel: +86(25)-5239 7600 Ext: 8815

Fax: +86(25) -8550 8840

Website: www.njzlighting.com

Skype: NJZ.Lighting

To contact us via email, our address is:

Sales Support: Sales@njztech.com

General Inquiry: Info@njztech.com

Tech Support: Tech.support@njztech.com

Warranty: Warranty.service@njztech.com

Dealership: Dealers@njztech.com

Business Hours:

8:30AM - 5:00PM (PST) Monday - Friday

North America Operation Center

NJZ Lighting Technology USA Inc. Atlanta

Address: 150 Selig Drive, Atlanta, GA 30336

Mail Inquiry/Payment: PO BOX 2341, Suwanee, GA 30024

Main: 404.693.6691 | Fax: 404.699.5802

Sales Email: sales@NJZtechUSA.com

Customer Service: support@NJZtechUSA.com

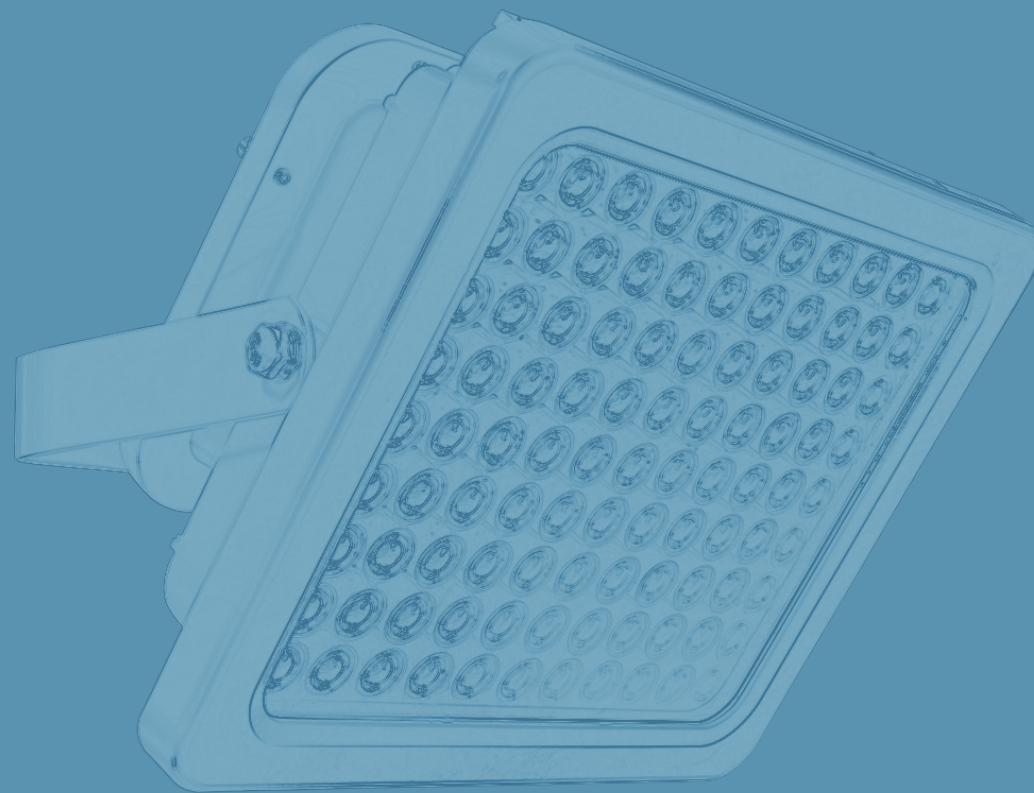
Dallas-Fort Worth

Address: 5500 Alliance Gateway Fwy,

Fort Worth, TX 76177, USA

Contact: Peter Lee

Email: Peter.lee@njztech.com



Installation Manual

Defender™ Industrial LED Luminaire

LED Explosion-proof Floodlight
(NJZ-FEL-B Series)



**NJZ**
LIGHTINGEmail: Tech.support@njztech.com
Web: www.njzlighting.com

Defender™ Industrial LED Luminaire

LED Explosion-proof Floodlight

(NJZ-FEL-B Series)

Product Features

- 5-year Warranty
- Wet location rated
- IP66

Packing List

- 1* LED Luminaire
- 1* Accessories box
- 1* Installation Manual (Ver. 01/01/2015)

BEFORE YOU BEGIN

Read these instructions completely and carefully.



RISK OF ELECTRIC SHOCK

- Turn power off before inspection, installation or removal.
- Properly ground electrical enclosure.
- Make sure the supply voltage is the same as the rated luminaire voltage.



RISK OF FIRE

- Follow all NEC and local codes.
- Use only UL or IEC approved wire for input/output connections.
- Do not operate in ambient temperatures above those indicated on the luminaire nameplate.
- Operating Temperature: -30°C ~ +50°C (-22°F to +122°F)



Certification

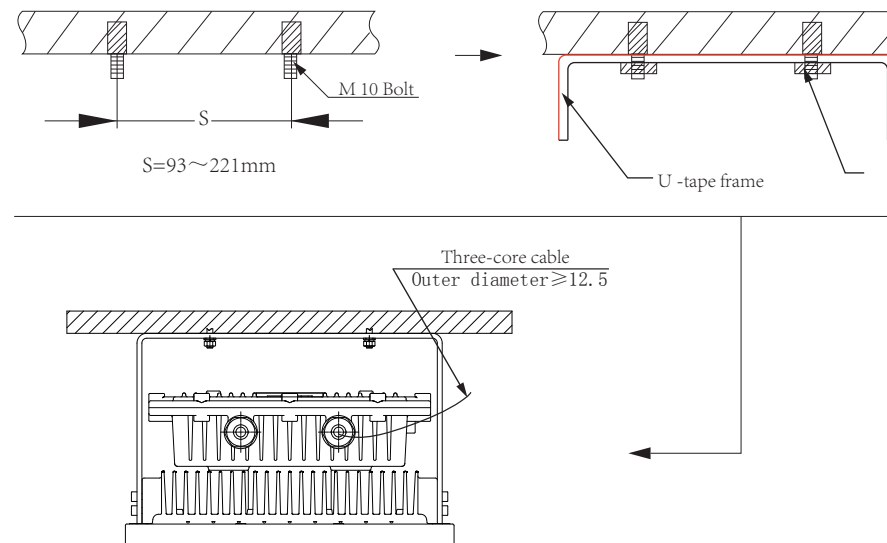


Unit Installation

For high performance and long term reliability, the light should be installed in free air. Carefully unpack unit and properly inspect for defects before installing. Wear work gloves to prevent dirt and oil from being transferred to the luminaire.

A: Ceiling Type

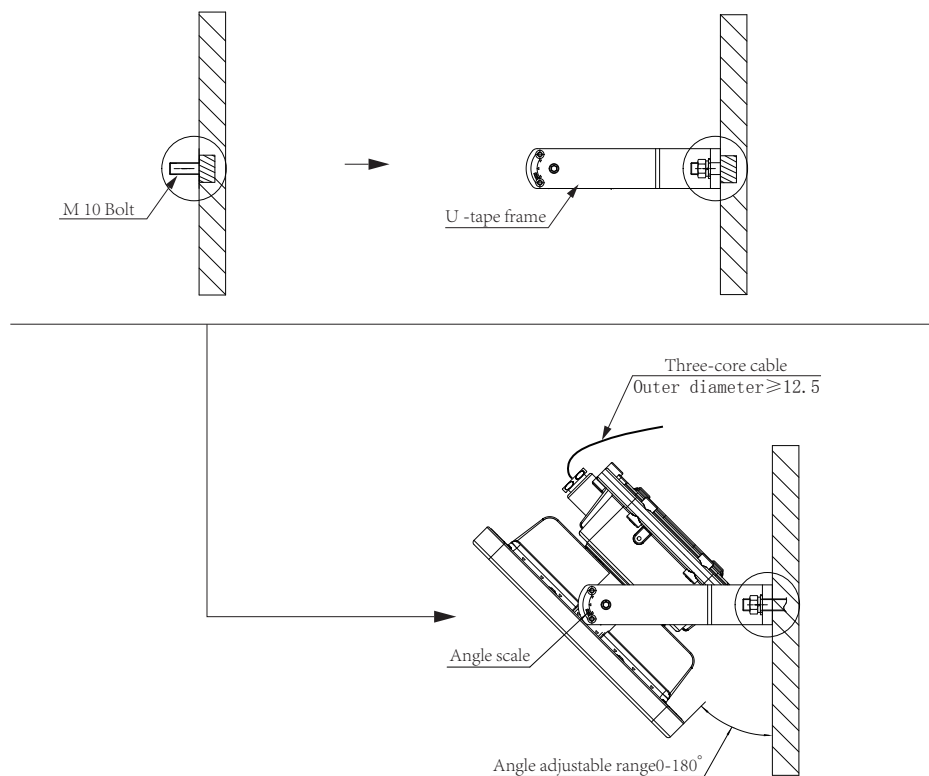
1. According to the bracket hole distance, installed two M10 bolts on the roof.
2. Tighten the bracket from two sides to wrench tight.
3. Bolt the universal mounting bracket and tighten the M10 bolts to the field mounting point.
4. Wiring. (Connect supply wires to luminaire wire leads per the wiring diagram using methods that comply with all applicable codes.)





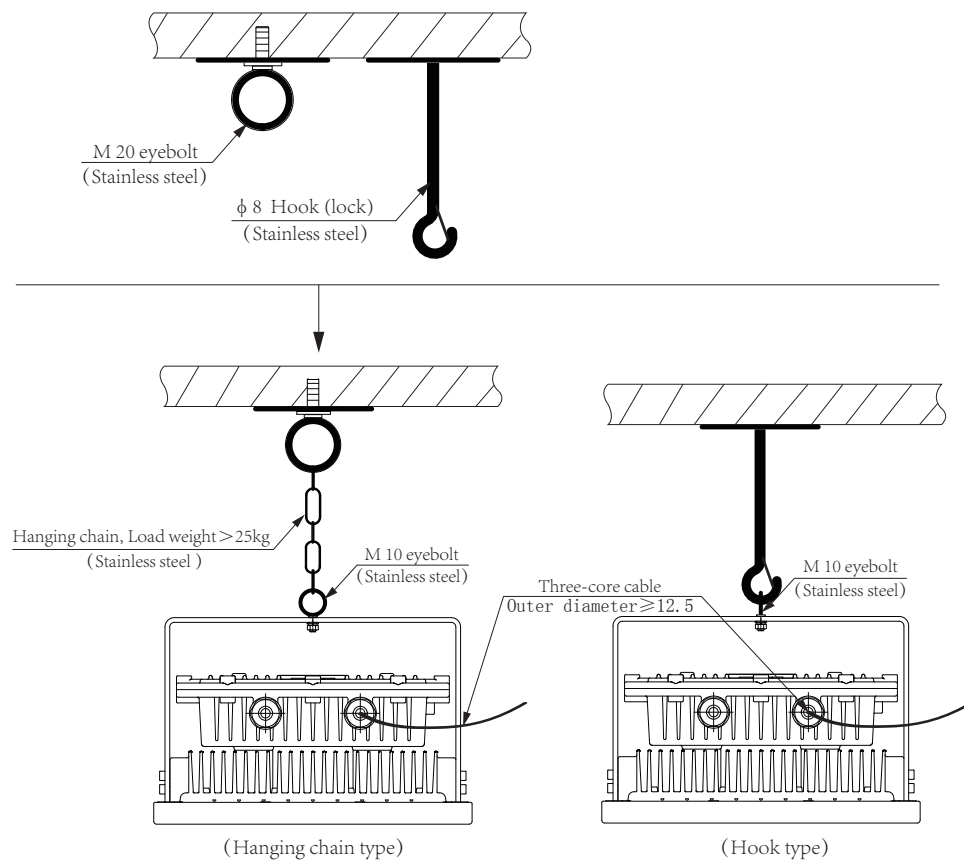
B: Wall Type

1. According to the bracket hole distance, installed two M10 bolts on the side wall;
2. Tighten the bracket from two sides to wrench tight.
3. Bolt the universal mounting bracket and tighten the M10 bolts to the field mounting point.
4. Wiring. (Connect supply wires to luminaire wire leads per the wiring diagram using methods that comply with all applicable codes.)



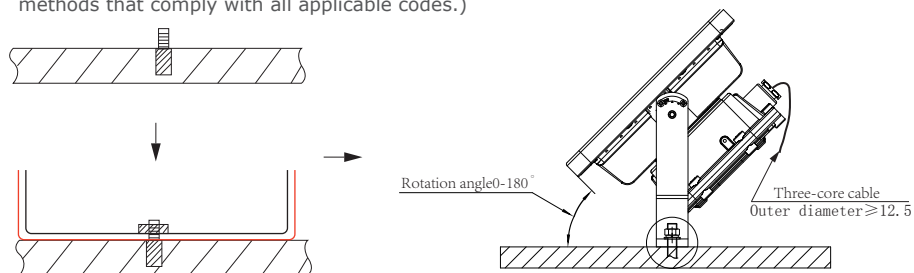
C. Hanging Chain

1. Install a M20 eyebolt or hook on the roof;
2. Tighten the bracket from two sides to wrench tight.
3. Tighten the M10 eyebolt attached to the hanging ring to ensure the hanging ring is securely connected to the light fixture.
4. Wiring. (Connect supply wires to luminaire wire leads per the wiring diagram using



D: Floor Type

1. According to the bracket hole distance, installed two M10 bolts on the ground or pipe stand.
2. Tighten the bracket from two sides to wrench tight.
3. Bolt the universal mounting bracket and tighten the M10 bolts to the field mounting point.
4. Wiring. (Connect supply wires to luminaire wire leads per the wiring diagram using methods that comply with all applicable codes.)



Product Dimension (NJZ-FEL-B-Series)

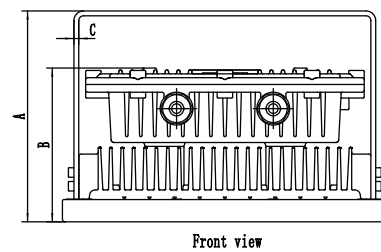
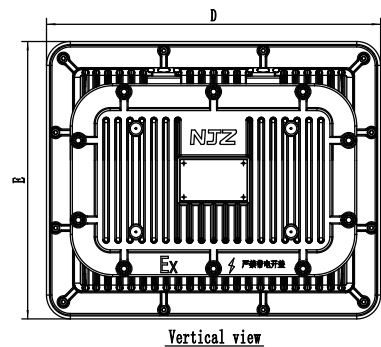
- FEL-B (80W/100W/120W/150W)

A	B	C	D	E
218	159	4	336	279

- FEL-B (20W/40W/50W/60W)

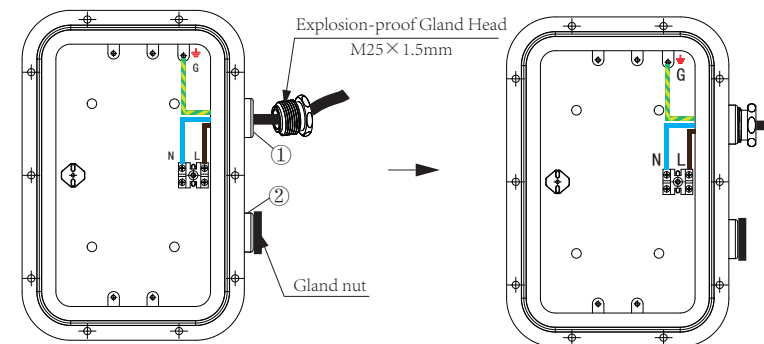
A	B	C	D	E
205	130	3	240	200

Measuring Unit : mm



Wiring

1. Connect supply wires to luminaire wire leads per the wiring diagram using methods that comply with all applicable codes.
2. Turn power on.
3. Check whether it concerns an AC(Alternating Current)based or DC(Direct Current)based system.



Troubleshooting

Symptom	Solution
Luminaire will not turn on.	<ul style="list-style-type: none"> • Check that the color of the supply side wires match the color of the wires they are connected to. • Check that all wire connectors are properly connected. • Verify that your input voltage is within specs.
Mounting insert slides from side to side.	<ul style="list-style-type: none"> • If you are using any additional controls IE wireless controls / motion sensors, please also verify that those are working properly and that the unit is setup to interface with the controllers. • Check that the mounting insert is properly tightened using the adjustment screws provided.

- The product should not be placed in municipal waste.
- Check local regulations for disposal of electronic products.
- Features and specifications are subject to change without notice.