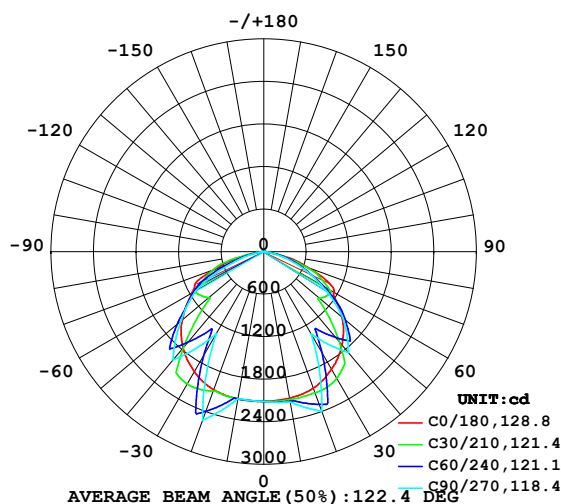


LUMINAIRE PHOTOMETRIC TEST REPORT

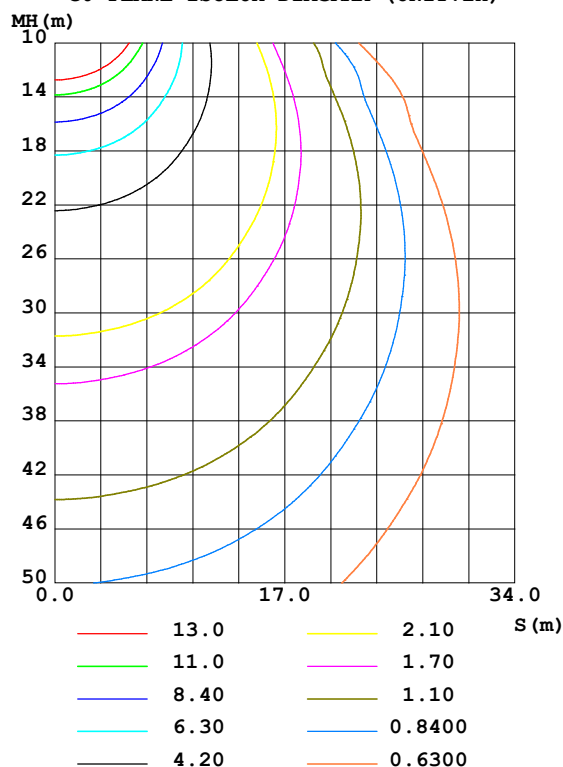
Test:U:220.14V I:0.2674A P:57.428W PF:0.9757 Freq:49.99Hz Lamp Flux:6447.88x1 lm		
NAME: Linear	TYPE:Linear	WEIGHT:
SPEC.:60W	DIM.:	SERIAL No.:N/A
MFR.: NJZ Lighting Technology Co.,Ltd	SUR.:N/A	Shielding Angle:N/A

DATA OF LAMP		PHOTOMETRIC DATA Eff: 112.28 lm/W			
MODEL NJZ-FEL-G-60-V01-RZ-T		Imax(cd)	2530	S/MH(C0/180)	1.37
NOMINAL POWER(W)	60	LOR(%)	100.0	S/MH(C90/270)	1.08
RATED VOLTAGE(V)	220	TOTAL FLUX(lm)	6447.9	η UP,DN(C0-180)	0.0,49.2
NOMINAL FLUX(lm)	6447.88	CIE CLASS	DIRECT	η UP,DN(C180-360)	0.0,50.8
LAMPS INSIDE	1	η up(%)	0.0	CIBSE SHR NOM	1.00
TEST VOLTAGE(V)	220	η down(%)	100.0	CIBSE SHR MAX	1.05

LUMINOUS INTENSITY DISTRIBUTION DIAGRAM



C0 PLANE ISOLUX DIAGRAM (UNIT:lx)



H(β) Range:-90 - 90DEG
H(β) Interval: 1.0DEG
Test Speed: HIGH
Temperature:25.3DEG
Operators:CL
Test Date:17 October 2019

V(B) Range:-80 - 80DEG
V(B) Interval: 5.0DEG
Test System:EVERFINE GO-2000A_V1 SYSTEM V2.0.366
Humidity:65.0%
Test Distance:6.010m [K=1.0000]
Remarks:

ZONAL FLUX DIAGRAM

ZONAL FLUX DIAGRAM:

γ	C0	C45	C90	C135	C180	C225	C270	C315	γ	Φ zone	Φ total	%lum, lamp
10	2099	2131	2153	2145	2109	2109	2104	2104	0- 10	202.2	202.2	3.14, 3.14
20	2048	2204	2396	2247	2073	2258	2530	2259	10- 20	619.5	821.7	12.7, 12.7
30	1912	1980	1336	2057	1957	2114	1334	2101	20- 30	958.2	1780	27.6, 27.6
40	1717	1237	1862	1250	1774	1246	1995	1210	30- 40	1079	2859	44.3, 44.3
50	1439	1541	1461	1527	1501	1625	1525	1594	40- 50	1242	4100	63.6, 63.6
60	1143	1071	928.4	1116	1173	1122	1105	1075	50- 60	1128	5228	81.1, 81.1
70	672.0	521.9	449.9	586.3	742.5	734.1	465.1	678.7	60- 70	805.1	6034	93.6, 93.6
80	75.15	167.4	58.02	191.0	73.08	176.3	59.01	186.5	70- 80	377.8	6411	99.4, 99.4
90	2.113	0	0	0	1.772	0	0	0	80- 90	36.59	6448	100, 100
100									90-100			
110									100-110			
120									110-120			
130									120-130			
140									130-140			
150									140-150			
160									150-160			
170									160-170			
180									170-180			
DEG	LUMINOUS INTENSITY:cd									UNIT:lm		

Conical surface Flux(90deg): 3475.5 lm

%lum = 53.9%

%lamp = 53.9%

Conical surface Flux(120deg): 5228.4 lm

%lum = 81.1%

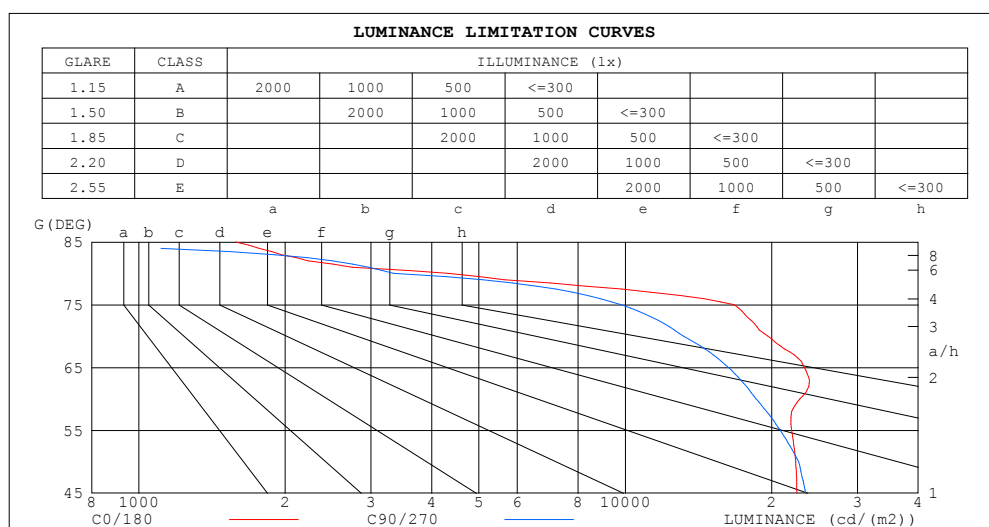
%lamp = 81.1%

H(β) Range:-90 - 90DEG
 H(β) Interval: 1.0DEG
 Test Speed: HIGH
 Temperature:25.3DEG
 Operators:CL
 Test Date:17 October 2019

V(B) Range:-80 - 80DEG
 V(B) Interval: 5.0DEG
 Test System:EVERFINE GO-2000A_V1 SYSTEM V2.0.366
 Humidity:65.0%
 Test Distance:6.010m [K=1.0000]
 Remarks:

LUMINANCE LIMITATION CURVES

Test:U:220.14V I:0.2674A P:57.428W PF:0.9757 Freq:49.99Hz Lamp Flux:6447.88x1 lm		
NAME: Linear	TYPE:Linear	WEIGHT:
SPEC.:60W	DIM.:	SERIAL No.:N/A
MFR.: NJZ Lighting Technology Co.,Ltd	SUR.:N/A	Shielding Angle:N/A



LUMINANCE cd/(m2)		
G (DEG)	C0/180	C90/270
85	1580	0
80	4328	3341
75	16758	9813
70	19647	13155
65	23331	16307
60	22866	18568
55	21984	20829
50	22391	22729
45	22527	23495

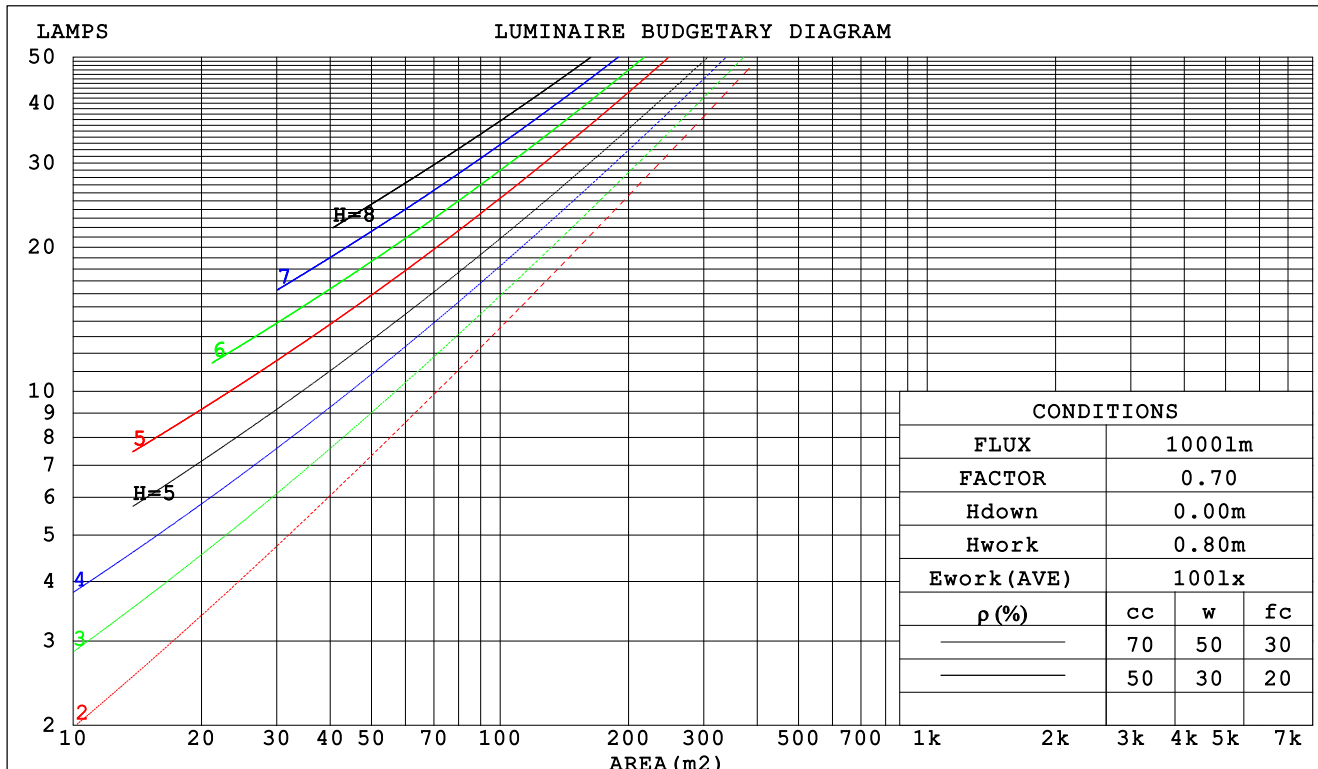
H(β) Range:-90 - 90DEG
H(β) Interval: 1.0DEG
Test Speed: HIGH
Temperature:25.3DEG
Operators:CL
Test Date:17 October 2019

V(B) Range:-80 - 80DEG
V(B) Interval: 5.0DEG
Test System:EVERFINE GO-2000A_V1 SYSTEM V2.0.366
Humidity:65.0%
Test Distance:6.010m [K=1.0000]
Remarks:

CU AND LUMINAIRE BUDGETARY ESTIMATE DIAGRAM

Test:U:220.14V I:0.2674A P:57.428W PF:0.9757 Freq:49.99Hz Lamp Flux:6447.88x1 lm		
NAME: Linear	TYPE:Linear	WEIGHT:
SPEC.:60W	DIM.:	SERIAL No.:N/A
MFR.: NJZ Lighting Technology Co.,Ltd	SUR.:N/A	Shielding Angle:N/A

pcc	80%			70%			50%			30%			10%			0
pw	50%	30%	10%	50%	30%	10%	50%	30%	10%	50%	30%	10%	50%	30%	10%	0
pfc	20%			20%			20%			20%			20%			0
RCR	RCR:Room Cavity Ratio						Coefficients of Utilization(CU)									
0.0	1.19	1.19	1.19	1.16	1.16	1.16	1.11	1.11	1.11	1.06	1.06	1.06	1.02	1.02	1.02	1.00
1.0	1.05	1.01	.97	1.03	.99	.95	.98	.95	.92	.94	.92	.90	.91	.89	.87	.85
2.0	.91	.85	.79	.90	.83	.78	.86	.81	.76	.83	.78	.75	.80	.76	.73	.71
3.0	.80	.72	.66	.79	.71	.65	.76	.69	.64	.73	.67	.63	.70	.66	.62	.60
4.0	.71	.62	.56	.70	.61	.55	.67	.60	.54	.65	.59	.54	.63	.57	.53	.51
5.0	.63	.54	.48	.62	.54	.47	.60	.53	.47	.58	.52	.46	.56	.50	.46	.44
6.0	.57	.48	.42	.56	.47	.41	.54	.47	.41	.52	.46	.41	.51	.45	.40	.38
7.0	.51	.43	.37	.51	.42	.36	.49	.42	.36	.48	.41	.36	.46	.40	.36	.34
8.0	.47	.38	.33	.46	.38	.32	.45	.37	.32	.44	.37	.32	.42	.36	.32	.30
9.0	.43	.35	.29	.42	.35	.29	.41	.34	.29	.40	.34	.29	.39	.33	.29	.27
10.0	.40	.32	.26	.39	.31	.26	.38	.31	.26	.37	.31	.26	.36	.30	.26	.24



H(β) Range:-90 - 90DEG
H(β) Interval: 1.0DEG
Test Speed: HIGH
Temperature:25.3DEG
Operators:CL
Test Date:17 October 2019

V(B) Range:-80 - 80DEG
V(B) Interval: 5.0DEG
Test System:EVERFINE GO-2000A_V1 SYSTEM V2.0.366
Humidity:65.0%
Test Distance:6.010m [K=1.0000]
Remarks:

WEC AND CCEC

Test:U:220.14V I:0.2674A P:57.428W PF:0.9757 Freq:49.99Hz Lamp Flux:6447.88x1 lm		
NAME: Linear	TYPE:Linear	WEIGHT:
SPEC.:60W	DIM.:	SERIAL No.:N/A
MFR.: NJZ Lighting Technology Co.,Ltd	SUR.:N/A	Shielding Angle:N/A

pcc	80%			70%			50%			30%			10%			0	
pw	50%	30%	10%	50%	30%	10%	50%	30%	10%	50%	30%	10%	50%	30%	10%	0	
pfc	20%			20%			20%			20%			20%			0	
RCR	RCR:Room Cavity Ratio						Wall Exitance Coefficients (WEC)										
0.0																	
1.0	.293	.166	.053	.286	.163	.052	.272	.156	.050	.260	.150	.048	.249	.144	.047		
2.0	.282	.155	.047	.276	.152	.047	.265	.147	.046	.254	.142	.045	.244	.138	.044		
3.0	.265	.141	.042	.259	.139	.042	.249	.135	.041	.239	.131	.040	.230	.128	.039		
4.0	.246	.128	.038	.241	.126	.037	.232	.123	.037	.223	.120	.036	.216	.117	.036		
5.0	.228	.116	.034	.224	.115	.033	.216	.112	.033	.208	.110	.033	.201	.108	.032		
6.0	.212	.106	.030	.209	.105	.030	.201	.103	.030	.195	.101	.030	.188	.099	.029		
7.0	.198	.098	.028	.195	.097	.028	.188	.095	.027	.182	.093	.027	.176	.092	.027		
8.0	.185	.090	.025	.182	.090	.025	.176	.088	.025	.171	.087	.025	.166	.085	.025		
9.0	.174	.084	.023	.171	.083	.023	.166	.082	.023	.161	.081	.023	.156	.079	.023		
10.0	.163	.078	.022	.161	.078	.022	.156	.077	.022	.152	.075	.021	.148	.074	.021		

pcc	80%			70%			50%			30%			10%			0
pw	50%	30%	10%	50%	30%	10%	50%	30%	10%	50%	30%	10%	50%	30%	10%	0
pfc	20%			20%			20%			20%			20%			0
RCR	RCR:Room Cavity Ratio						Ceiling Cavity Exitance Coefficients (CCEC)									
0.0	.190	.190	.190	.163	.163	.163	.111	.111	.111	.064	.064	.064	.020	.020	.020	
1.0	.179	.156	.136	.153	.134	.117	.105	.092	.081	.060	.053	.047	.019	.017	.015	
2.0	.171	.132	.099	.146	.114	.086	.100	.079	.060	.058	.046	.035	.019	.015	.011	
3.0	.163	.114	.075	.140	.099	.065	.096	.068	.046	.056	.040	.027	.018	.013	.009	
4.0	.156	.101	.059	.134	.087	.051	.092	.061	.036	.053	.036	.021	.017	.012	.007	
5.0	.149	.091	.047	.128	.078	.041	.088	.055	.029	.051	.032	.017	.016	.010	.006	
6.0	.142	.082	.039	.122	.071	.034	.084	.050	.024	.049	.029	.014	.016	.010	.005	
7.0	.135	.075	.033	.116	.065	.029	.080	.046	.021	.047	.027	.012	.015	.009	.004	
8.0	.129	.069	.029	.111	.060	.025	.077	.042	.018	.045	.025	.011	.014	.008	.004	
9.0	.123	.065	.025	.106	.056	.022	.073	.039	.016	.043	.023	.009	.014	.008	.003	
10.0	.117	.060	.022	.101	.052	.020	.070	.037	.014	.041	.022	.008	.013	.007	.003	

H(β) Range:-90 - 90DEG
H(β) Interval: 1.0DEG
Test Speed: HIGH
Temperature:25.3DEG
Operators:CL
Test Date:17 October 2019

V(B) Range:-80 - 80DEG
V(B) Interval: 5.0DEG
Test System:EVERFINE GO-2000A_V1 SYSTEM V2.0.366
Humidity:65.0%
Test Distance:6.010m [K=1.0000]
Remarks:

UGR(Unified Glare Rating) Table

Test:U:220.14V I:0.2674A P:57.428W PF:0.9757 Freq:49.99Hz Lamp Flux:6447.88x1 lm										
NAME: Linear					TYPE:Linear			WEIGHT:		
SPEC.:60W					DIM.:			SERIAL No.:N/A		
MFR.: NJZ Lighting Technology Co.,Ltd					SUR.:N/A			Shielding Angle:N/A		
ceiling/cavity	0.7	0.7	0.5	0.5	0.3	0.7	0.7	0.5	0.5	0.3
walls	0.5	0.3	0.5	0.3	0.3	0.5	0.3	0.5	0.3	0.3
working plane	0.2	0.2	0.2	0.2	0.2	0.2	0.2	0.2	0.2	0.2
Room dimensions	Viewed crosswise					Viewed endwise				
x = 2H y = 2H	17.1	18.6	17.4	18.8	19.1	16.9	18.4	17.2	18.6	18.8
3H	18.4	19.8	18.7	20.0	20.3	17.9	19.3	18.2	19.5	19.7
4H	18.8	20.2	19.1	20.4	20.7	18.1	19.5	18.4	19.7	20.0
6H	18.9	20.2	19.2	20.4	20.7	18.1	19.4	18.5	19.7	19.9
8H	18.9	20.1	19.2	20.4	20.6	18.1	19.3	18.4	19.6	19.9
12H	18.8	20.0	19.2	20.3	20.6	18.0	19.2	18.4	19.5	19.8
4H 2H	17.7	19.0	18.0	19.3	19.5	17.5	18.8	17.8	19.0	19.3
3H	19.2	20.4	19.6	20.7	21.0	18.6	19.7	18.9	20.0	20.3
4H	19.8	20.8	20.1	21.1	21.5	18.9	20.0	19.3	20.3	20.6
6H	20.0	20.9	20.4	21.3	21.6	19.0	19.9	19.4	20.3	20.6
8H	20.0	20.8	20.4	21.2	21.6	19.0	19.8	19.4	20.2	20.6
12H	19.9	20.7	20.3	21.1	21.5	18.9	19.7	19.3	20.1	20.5
8H 4H	19.9	20.8	20.3	21.1	21.5	19.1	20.0	19.5	20.4	20.8
6H	20.2	20.9	20.6	21.3	21.7	19.3	20.0	19.7	20.4	20.8
8H	20.2	20.8	20.7	21.3	21.7	19.2	19.9	19.7	20.3	20.7
12H	20.2	20.7	20.7	21.2	21.6	19.2	19.7	19.7	20.2	20.7
12H 4H	19.9	20.7	20.3	21.0	21.4	19.1	19.9	19.6	20.3	20.7
6H	20.2	20.8	20.6	21.2	21.7	19.3	19.9	19.7	20.3	20.8
8H	20.2	20.7	20.7	21.2	21.7	19.2	19.8	19.7	20.2	20.7
Variations with the observer position at spacings:										
S = 1.0H	+ 0.4 / - 0.8					+ 0.2 / - 0.2				
1.5H	+ 0.7 / - 0.6					+ 0.4 / - 0.8				
2.0H	+ 0.8 / - 1.0					+ 0.6 / - 0.7				

CIE Pub.117, 6448 lm Total Lamp Luminous Flux Correct (8log(F/F0) = 6.5)

H(β) Range:-90 - 90DEG
H(β) Interval: 1.0DEG
Test Speed: HIGH
Temperature:25.3DEG
Operators:CL
Test Date:17 October 2019

V(B) Range:-80 - 80DEG
V(B) Interval: 5.0DEG
Test System:EVERFINE GO-2000A_V1 SYSTEM V2.0.366
Humidity:65.0%
Test Distance:6.010m [K=1.0000]
Remarks:

UTILIZATION FACTORS TABLE

Test:U:220.14V I:0.2674A P:57.428W PF:0.9757 Freq:49.99Hz Lamp Flux:6447.88x1 lm		
NAME: Linear	TYPE:Linear	WEIGHT:
SPEC.:60W	DIM.:	SERIAL No.:N/A
MFR.: NJZ Lighting Technology Co.,Ltd	SUR.:N/A	Shielding Angle:N/A

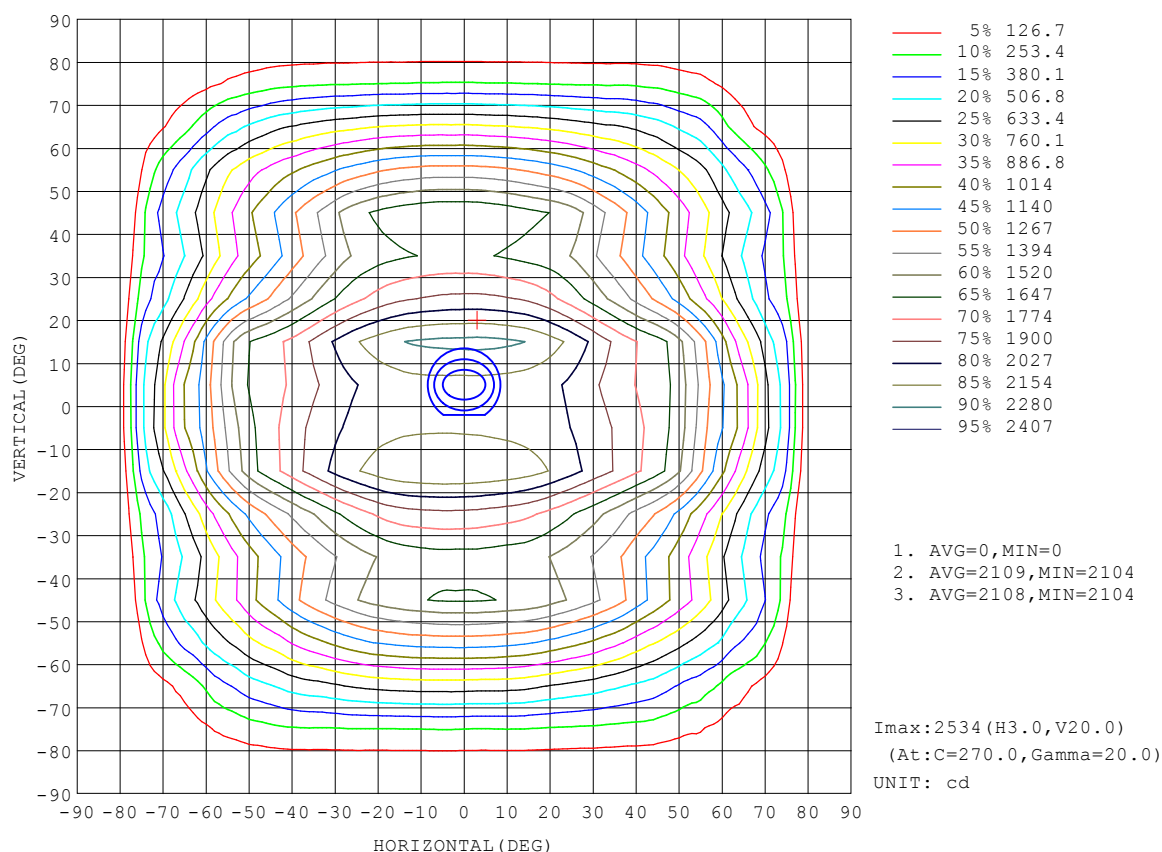
REFLECTANCE										
Ceiling	0.8	0.8	0.8	0.7	0.7	0.7	0.5	0.5	0.5	0
Walls	0.7	0.5	0.3	0.7	0.5	0.3	0.7	0.5	0.3	0
Working plane	0.2	0.2	0.2	0.2	0.2	0.2	0.2	0.2	0.2	0
ROOM INDEX	UTILIZATION FACTORS (PERCENT) $k(RI) \times RCR = 5$									
$k = 0.60$	57	45	38	56	45	38	55	45	38	32
0.80	67	56	48	66	55	48	65	55	48	41
1.00	76	65	58	75	65	58	73	66	57	50
1.25	84	73	66	82	72	66	79	71	65	58
1.50	89	79	72	87	78	72	84	76	70	63
2.00	96	87	81	94	86	80	90	84	79	71
2.50	100	92	86	98	91	85	94	88	83	75
3.00	103	96	91	101	95	90	97	92	88	79
4.00	107	101	97	105	100	96	100	96	93	84
5.00	109	105	101	107	103	99	102	99	96	87
ROOM INDEX	UF(total)									Direct
According to DIN EN 13032-2 2004			Suspended					SHRNOM = 1.25		

$H(\beta)$ Range:-90 - 90DEG
 $H(\beta)$ Interval: 1.0DEG
 Test Speed: HIGH
 Temperature:25.3DEG
 Operators:CL
 Test Date:17 October 2019

$V(B)$ Range:-80 - 80DEG
 $V(B)$ Interval: 5.0DEG
 Test System:EVERFINE GO-2000A_V1 SYSTEM V2.0.366
 Humidity:65.0%
 Test Distance:6.010m [K=1.0000]
 Remarks:

ISOCANDELA DIAGRAM

Test:U:220.14V I:0.2674A P:57.428W PF:0.9757 Freq:49.99Hz Lamp Flux:6447.88x1 lm		
NAME: Linear	TYPE:Linear	WEIGHT:
SPEC.:60W	DIM.:	SERIAL No.:N/A
MFR.: NJZ Lighting Technology Co.,Ltd	SUR.:N/A	Shielding Angle:N/A



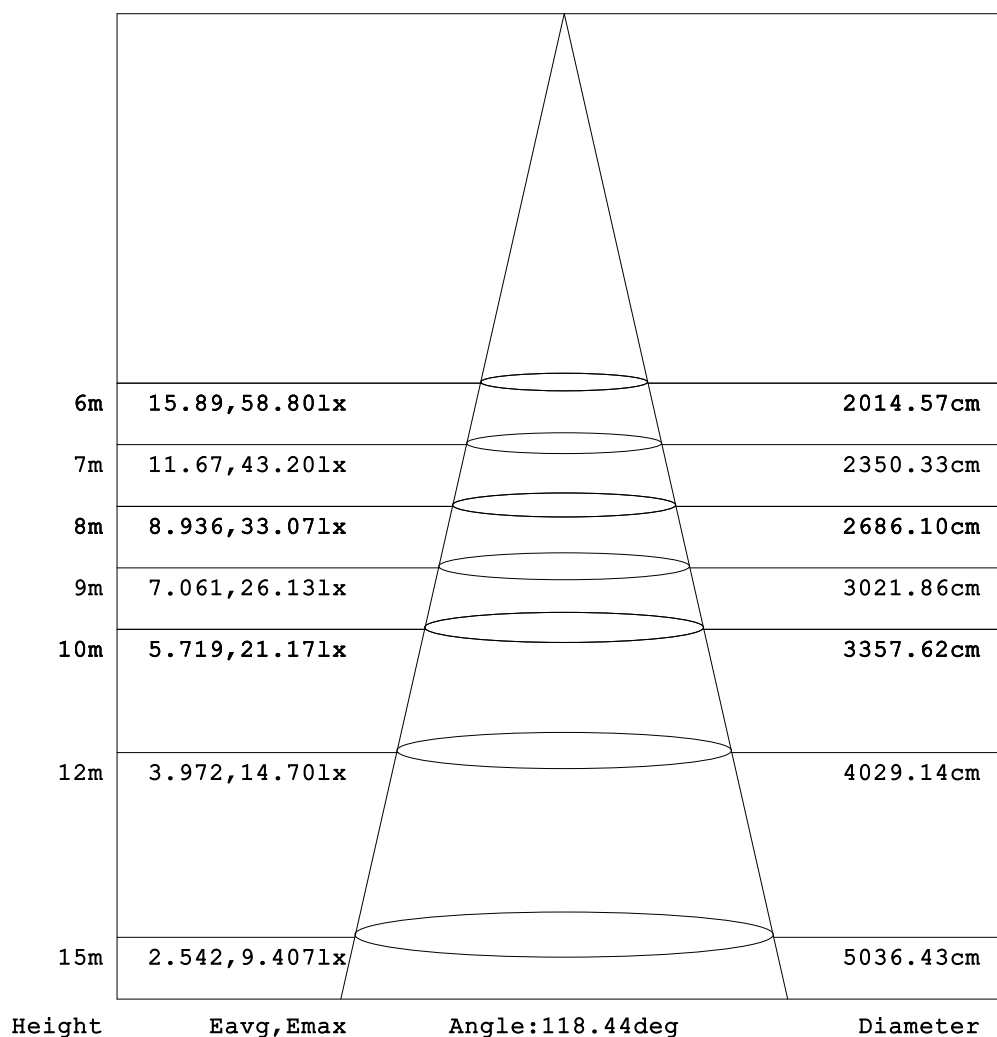
H(β) Range:-90 - 90DEG
H(β) Interval: 1.0DEG
Test Speed: HIGH
Temperature:25.3DEG
Operators:CL
Test Date:17 October 2019

V(B) Range:-80 - 80DEG
V(B) Interval: 5.0DEG
Test System:EVERFINE GO-2000A_V1 SYSTEM V2.0.366
Humidity:65.0%
Test Distance:6.010m [K=1.0000]
Remarks:

AAI Figure

Test:U:220.14V I:0.2674A P:57.428W PF:0.9757 Freq:49.99Hz Lamp Flux:6447.88x1 lm		
NAME: Linear	TYPE:Linear	WEIGHT:
SPEC.:60W	DIM.:	SERIAL No.:N/A
MFR.: NJZ Lighting Technology Co.,Ltd	SUR.:N/A	Shielding Angle:N/A

Flux out:5178 lm



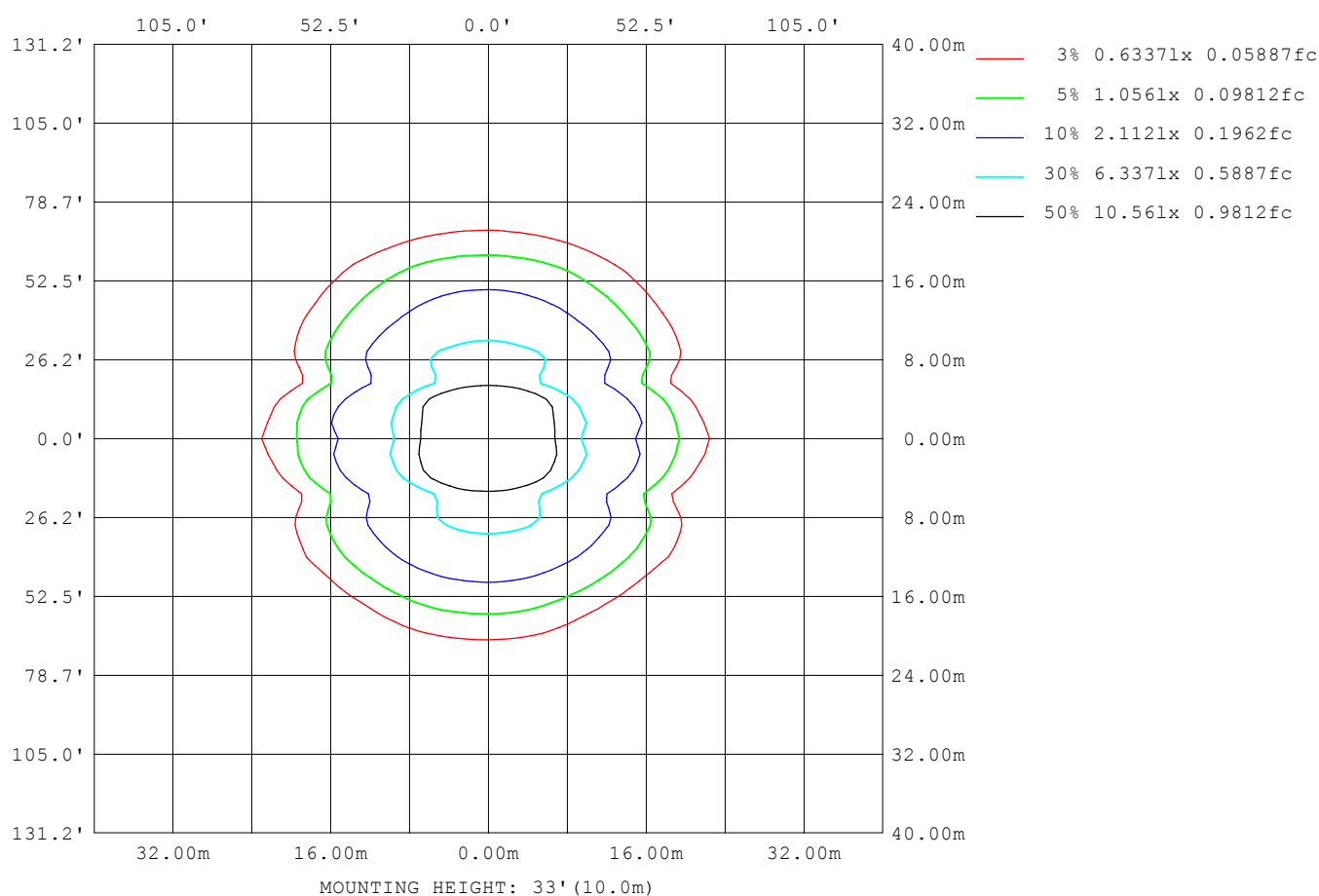
Note:The Curves indicate the illuminated area and the average illumination when the luminaire is at different distance.

H(β) Range:-90 - 90DEG
H(β) Interval: 1.0DEG
Test Speed: HIGH
Temperature:25.3DEG
Operators:CL
Test Date:17 October 2019

V(B) Range:-80 - 80DEG
V(B) Interval: 5.0DEG
Test System:EVERFINE GO-2000A_V1 SYSTEM V2.0.366
Humidity:65.0%
Test Distance:6.010m [K=1.0000]
Remarks:

ISOLUX DIAGRAM

Test:U:220.14V I:0.2674A P:57.428W PF:0.9757 Freq:49.99Hz Lamp Flux:6447.88x1 lm		
NAME: Linear	TYPE:Linear	WEIGHT:
SPEC.:60W	DIM.:	SERIAL No.:N/A
MFR.: NJZ Lighting Technology Co.,Ltd	SUR.:N/A	Shielding Angle:N/A



H(β) Range:-90 - 90DEG
H(β) Interval: 1.0DEG
Test Speed: HIGH
Temperature:25.3DEG
Operators:CL
Test Date:17 October 2019

V(B) Range:-80 - 80DEG
V(B) Interval: 5.0DEG
Test System:EVERFINE GO-2000A_V1 SYSTEM V2.0.366
Humidity:65.0%
Test Distance:6.010m [K=1.0000]
Remarks:

LED Avg.L Report

Test:U:220.14V I:0.2674A P:57.428W PF:0.9757 Freq:49.99Hz Lamp Flux:6447.88x1 lm		
NAME: Linear	TYPE:Linear	WEIGHT:
SPEC.:60W	DIM.:	SERIAL No.:N/A
MFR.: NJZ Lighting Technology Co.,Ltd	SUR.:N/A	Shielding Angle:N/A

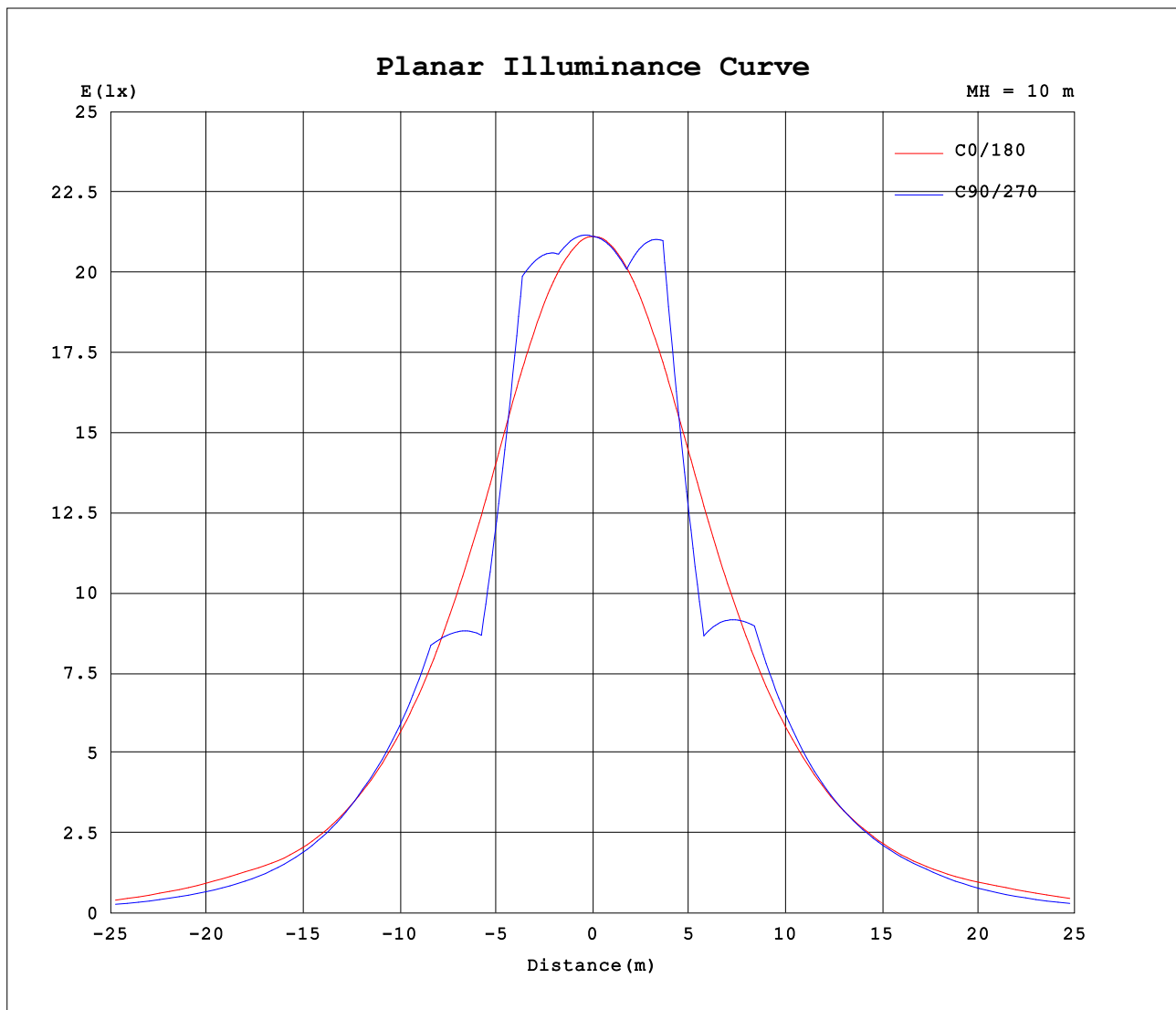
AvgL	cd/m2
L_0~180 (65) av	24268
L_0~180 (75) av	17294
L_0~180 (85) av	1681
L_90~270 (65) av	17441
L_90~270 (75) av	9969
L_90~270 (85) av	0
L_45 (65) av	20335
L_45 (75) av	15835
L_45 (85) av	2249

Standard: GB/T 29293-2012

H(β) Range:-90 - 90DEG
H(β) Interval: 1.0DEG
Test Speed: HIGH
Temperature:25.3DEG
Operators:CL
Test Date:17 October 2019

V(B) Range:-80 - 80DEG
V(B) Interval: 5.0DEG
Test System:EVERFINE GO-2000A_V1 SYSTEM V2.0.366
Humidity:65.0%
Test Distance:6.010m [K=1.0000]
Remarks:

Planar Illuminance Curve



H(β) Range:-90 - 90DEG
H(β) Interval: 1.0DEG
Test Speed: HIGH
Temperature:25.3DEG
Operators:CL
Test Date:17 October 2019

V(B) Range:-80 - 80DEG
V(B) Interval: 5.0DEG
Test System:EVERFINE GO-2000A_V1 SYSTEM V2.0.366
Humidity:65.0%
Test Distance:6.010m [K=1.0000]
Remarks:

LUMINOUS DISTRIBUTION INTENSITY DATA

Test:U:220.14V I:0.2674A P:57.428W PF:0.9757 Freq:49.99Hz Lamp Flux:6447.88x1 lm		
NAME: Linear	TYPE:Linear	WEIGHT:
SPEC.:60W	DIM.:	SERIAL No.:N/A
MFR.: NJZ Lighting Technology Co.,Ltd	SUR.:N/A	Shielding Angle:N/A

Table--1

UNIT: cd

[illegible]

```
H( $\beta$ ) Range:-90 - 90DEG
H( $\beta$ ) Interval: 1.0DEG
Test Speed: HIGH
Temperature:25.3DEG
Operators:CL
Test Date:17 October 2019
```

V(B) Range:-80 - 80DEG
V(B) Interval: 5.0DEG
Test System:EVERFINE GO-2000A_V1 SYSTEM V2.0.366
Humidity:65.0%
Test Distance:6.010m [K=1.0000]
Remarks:

LUMINOUS DISTRIBUTION INTENSITY DATA

Test:U:220.14V I:0.2674A P:57.428W PF:0.9757 Freq:49.99Hz Lamp Flux:6447.88x1 lm		
NAME: Linear	TYPE:Linear	WEIGHT:
SPEC.:60W	DIM.:	SERIAL No.:N/A
MFR.: NJZ Lighting Technology Co.,Ltd	SUR.:N/A	Shielding Angle:N/A

Table--2

UNIT: cd

[illegible]

```
H( $\beta$ ) Range:-90 - 90DEG
H( $\beta$ ) Interval: 1.0DEG
Test Speed: HIGH
Temperature:25.3DEG
Operators:CL
Test Date:17 October 2019
```

V(B) Range:-80 - 80DEG
V(B) Interval: 5.0DEG
Test System:EVERFINE GO-2000A_V1 SYSTEM V2.0.366
Humidity:65.0%
Test Distance:6.010m [K=1.0000]
Remarks:

LUMINOUS DISTRIBUTION INTENSITY DATA

Test:U:220.14V I:0.2674A P:57.428W PF:0.9757 Freq:49.99Hz Lamp Flux:6447.88x1 lm		
NAME: Linear	TYPE:Linear	WEIGHT:
SPEC.:60W	DIM.:	SERIAL No.:N/A
MFR.: NJZ Lighting Technology Co.,Ltd	SUR.:N/A	Shielding Angle:N/A

Table--3

UNIT: cd

[illegible]

```
H( $\beta$ ) Range:-90 - 90DEG
H( $\beta$ ) Interval: 1.0DEG
Test Speed: HIGH
Temperature:25.3DEG
Operators:CL
Test Date:17 October 2019
```

V(B) Range:-80 - 80DEG
V(B) Interval: 5.0DEG
Test System:EVERFINE GO-2000A_V1 SYSTEM V2.0.366
Humidity:65.0%
Test Distance:6.010m [K=1.0000]
Remarks:

LUMINOUS DISTRIBUTION INTENSITY DATA

Test:U:220.14V I:0.2674A P:57.428W PF:0.9757 Freq:49.99Hz Lamp Flux:6447.88x1 lm		
NAME: Linear	TYPE:Linear	WEIGHT:
SPEC.:60W	DIM.:	SERIAL No.:N/A
MFR.: NJZ Lighting Technology Co.,Ltd	SUR.:N/A	Shielding Angle:N/A

Table--4

UNIT: cd

[illegible]

```
H( $\beta$ ) Range:-90 - 90DEG
H( $\beta$ ) Interval: 1.0DEG
Test Speed: HIGH
Temperature:25.3DEG
Operators:CL
Test Date:17 October 2019
```

V(B) Range:-80 - 80DEG
V(B) Interval: 5.0DEG
Test System:EVERFINE GO-2000A_V1 SYSTEM V2.0.366
Humidity:65.0%
Test Distance:6.010m [K=1.0000]
Remarks: