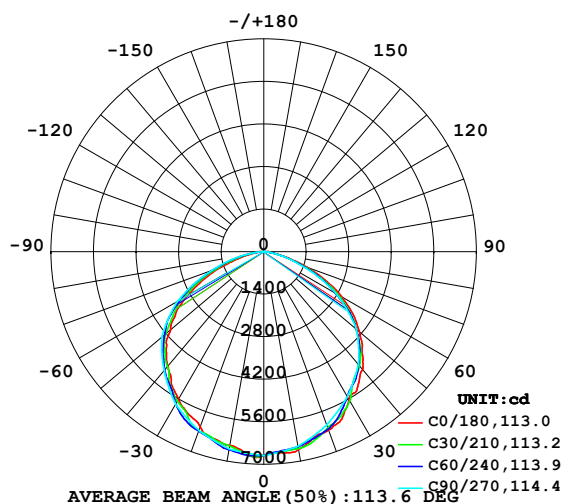


# LUMINAIRE PHOTOMETRIC TEST REPORT

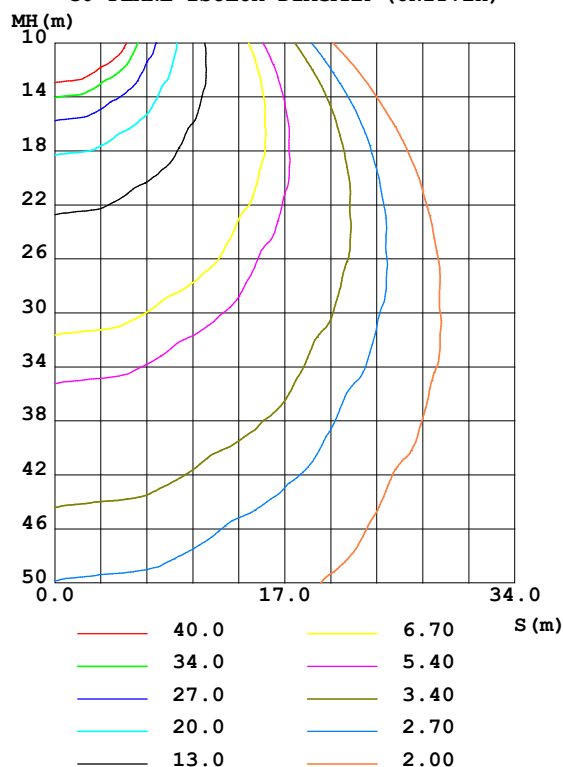
Test:U:120.14V I:1.0036A P:119.21W PF:0.9887 Freq:59.98Hz Lamp Flux:18558.6x1 lm		
NAME: LED Explosion-proof Flood Light	TYPE:Floodlight	WEIGHT:N/A
SPEC.:120W	DIM.: N/A	SERIAL No.:N/A
MFR.: NJZ Lighting Technology Co.,Ltd	SUR.:N/A	Shielding Angle:N/A

DATA OF LAMP		PHOTOMETRIC DATA Eff: 155.68 lm/W			
MODEL M-120-V01-RZ-T5-25-DL		Imax(cd)	6775	S/MH(C0/180)	1.25
NOMINAL POWER(W)	120	LOR(%)	100.0	S/MH(C90/270)	1.28
RATED VOLTAGE(V)	120	TOTAL FLUX(lm)	18559	$\eta$ UP,DN(C0-180)	0.0,48.2
NOMINAL FLUX(lm)	18558.6	CIE CLASS	DIRECT	$\eta$ UP,DN(C180-360)	0.0,51.8
LAMPS INSIDE	1	$\eta$ up(%)	0.0	CIBSE SHR NOM	1.25
TEST VOLTAGE(V)	120	$\eta$ down(%)	100.0	CIBSE SHR MAX	1.35

LUMINOUS INTENSITY DISTRIBUTION DIAGRAM



C0 PLANE ISOLUX DIAGRAM (UNIT:lx)



H( $\beta$ ) Range:-90 - 90DEG  
H( $\beta$ ) Interval: 1.0DEG  
Test Speed: HIGH  
Temperature:25.3DEG  
Operators:CL  
Test Date:20 March 2020

V(B) Range:-80 - 80DEG  
V(B) Interval: 5.0DEG  
Test System:EVERFINE GO-2000A\_V1 SYSTEM V2.0.366  
Humidity:65.0%  
Test Distance:6.010m [K=1.0000]  
Remarks:

## ZONAL FLUX DIAGRAM

### ZONAL FLUX DIAGRAM:

$\gamma$	C0	C45	C90	C135	C180	C225	C270	C315	$\gamma$	$\Phi$ zone	$\Phi$ total	%lum, lamp
10	6609	6530	6505	6450	6472	6564	6591	6681	0- 10	631.3	631.3	3.4,3.4
20	6243	6162	6067	6252	6126	6246	6260	6215	10- 20	1807	2439	13.1,13.1
30	5616	5543	5506	5477	5608	5685	5800	5778	20- 30	2744	5183	27.9,27.9
40	5068	4860	4848	4835	4903	4980	5109	5084	30- 40	3325	8508	45.8,45.8
50	4117	3980	3985	3932	4005	4187	4381	4267	40- 50	3518	12026	64.8,64.8
60	2943	2778	2739	2738	2867	3130	3283	3175	50- 60	3171	15198	81.9,81.9
70	1525	1399	1268	1350	1485	1749	1814	1773	60- 70	2226	17424	93.9,93.9
80	362.9	361.7	235.9	340.7	337.4	550.5	590.5	562.0	70- 80	989.0	18413	99.2,99.2
90	96.56	0	0	0	52.35	0	0	0	80- 90	145.8	18559	100,100
100									90-100			
110									100-110			
120									110-120			
130									120-130			
140									130-140			
150									140-150			
160									150-160			
170									160-170			
180									170-180			
DEG	LUMINOUS INTENSITY:cd									UNIT:lm		

Conical surface Flux(90deg): 10272 lm

%lum = 55.4%

%lamp = 55.4%

Conical surface Flux(120deg): 15198 lm

%lum = 81.9%

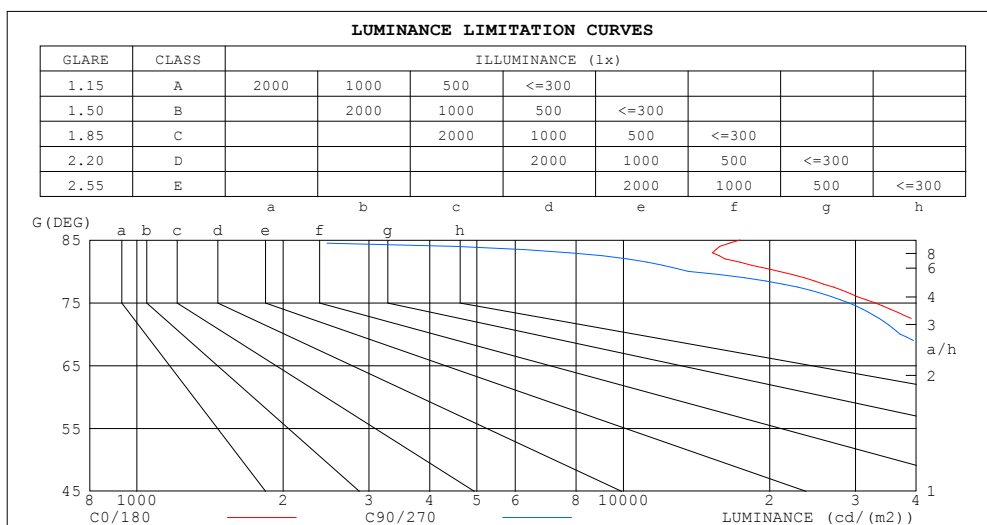
%lamp = 81.9%

H( $\beta$ ) Range:-90 - 90DEG  
 H( $\beta$ ) Interval: 1.0DEG  
 Test Speed: HIGH  
 Temperature:25.3DEG  
 Operators:CL  
 Test Date:20 March 2020

V(B) Range:-80 - 80DEG  
 V(B) Interval: 5.0DEG  
 Test System:EVERFINE GO-2000A\_V1 SYSTEM V2.0.366  
 Humidity:65.0%  
 Test Distance:6.010m [K=1.0000]  
 Remarks:

### LUMINANCE LIMITATION CURVES

Test:U:120.14V I:1.0036A P:119.21W PF:0.9887 Freq:59.98Hz Lamp Flux:18558.6x1 lm		
NAME: LED Explosion-proof Flood Light	TYPE:Floodlight	WEIGHT:N/A
SPEC.:120W	DIM.: N/A	SERIAL No.:N/A
MFR.: NJZ Lighting Technology Co.,Ltd	SUR.:N/A	Shielding Angle:N/A



LUMINANCE cd/(m2)		
G (DEG)	C0/180	C90/270
85	17382	0
80	20896	13587
75	32857	29046
70	44577	37061
65	52942	47405
60	58854	54786
55	62341	58617
50	64049	61995
45	64661	62460

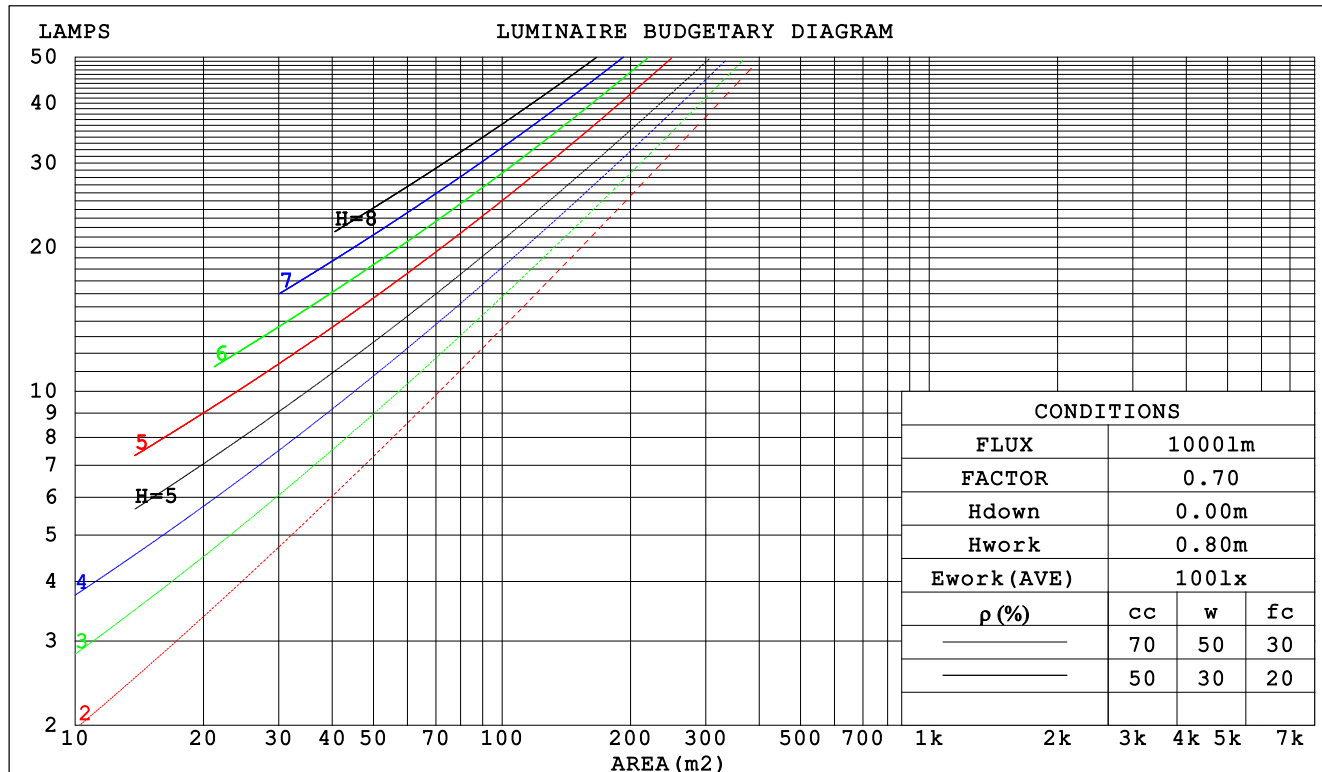
H( $\beta$ ) Range:-90 - 90DEG  
H( $\beta$ ) Interval: 1.0DEG  
Test Speed: HIGH  
Temperature:25.3DEG  
Operators:CL  
Test Date:20 March 2020

V(B) Range:-80 - 80DEG  
V(B) Interval: 5.0DEG  
Test System:EVERFINE GO-2000A\_V1 SYSTEM V2.0.366  
Humidity:65.0%  
Test Distance:6.010m [K=1.0000]  
Remarks:

### CU AND LUMINAIRE BUDGETARY ESTIMATE DIAGRAM

Test:U:120.14V I:1.0036A P:119.21W PF:0.9887 Freq:59.98Hz Lamp Flux:18558.6x1 lm		
NAME: LED Explosion-proof Flood Light	TYPE:Floodlight	WEIGHT:N/A
SPEC.:120W	DIM.: N/A	SERIAL No.:N/A
MFR.: NJZ Lighting Technology Co.,Ltd	SUR.:N/A	Shielding Angle:N/A

pcc	80%			70%			50%			30%			10%			0
pw	50%	30%	10%	50%	30%	10%	50%	30%	10%	50%	30%	10%	50%	30%	10%	0
pfc	20%			20%			20%			20%			20%			0
RCR	RCR:Room Cavity Ratio						Coefficients of Utilization(CU)									
0.0	1.19	1.19	1.19	1.16	1.16	1.16	1.11	1.11	1.11	1.06	1.06	1.06	1.02	1.02	1.02	1.00
1.0	1.05	1.01	.97	1.03	.99	.96	.98	.95	.93	.95	.92	.90	.91	.89	.87	.85
2.0	.92	.85	.80	.90	.84	.79	.86	.81	.77	.83	.79	.75	.80	.77	.73	.71
3.0	.81	.73	.66	.79	.72	.66	.76	.70	.65	.73	.68	.63	.71	.66	.62	.60
4.0	.71	.63	.56	.70	.62	.56	.68	.61	.55	.65	.59	.54	.63	.58	.54	.51
5.0	.64	.55	.48	.63	.54	.48	.61	.53	.48	.59	.52	.47	.57	.51	.47	.44
6.0	.57	.49	.42	.56	.48	.42	.55	.47	.42	.53	.46	.41	.51	.46	.41	.39
7.0	.52	.43	.37	.51	.43	.37	.50	.42	.37	.48	.42	.37	.47	.41	.36	.34
8.0	.47	.39	.33	.47	.39	.33	.45	.38	.33	.44	.38	.33	.43	.37	.32	.31
9.0	.44	.35	.30	.43	.35	.30	.42	.35	.30	.41	.34	.29	.40	.34	.29	.27
10.0	.40	.32	.27	.40	.32	.27	.39	.32	.27	.38	.31	.27	.37	.31	.27	.25



H(β) Range:-90 - 90DEG  
H(β) Interval: 1.0DEG  
Test Speed: HIGH  
Temperature:25.3DEG  
Operators:CL  
Test Date:20 March 2020

V(B) Range:-80 - 80DEG  
V(B) Interval: 5.0DEG  
Test System:EVERFINE GO-2000A\_V1 SYSTEM V2.0.366  
Humidity:65.0%  
Test Distance:6.010m [K=1.0000]  
Remarks:

### WEC AND CCEC

Test:U:120.14V I:1.0036A P:119.21W PF:0.9887 Freq:59.98Hz Lamp Flux:18558.6x1 lm		
NAME: LED Explosion-proof Flood Light	TYPE:Floodlight	WEIGHT:N/A
SPEC.:120W	DIM.: N/A	SERIAL No.:N/A
MFR.: NJZ Lighting Technology Co.,Ltd	SUR.:N/A	Shielding Angle:N/A

pcc	80%			70%			50%			30%			10%			0	
pw	50%	30%	10%	50%	30%	10%	50%	30%	10%	50%	30%	10%	50%	30%	10%	0	
pfc	20%			20%			20%			20%			20%			0	
RCR	RCR:Room Cavity Ratio						Wall Exitance Coefficients (WEC)										
0.0																	
1.0	.290	.165	.052	.283	.161	.051	.270	.155	.049	.258	.149	.048	.247	.143	.046		
2.0	.279	.153	.047	.273	.150	.046	.262	.145	.045	.251	.141	.044	.241	.136	.043		
3.0	.262	.139	.042	.256	.137	.041	.246	.133	.041	.236	.130	.040	.228	.126	.039		
4.0	.243	.126	.037	.239	.125	.037	.229	.122	.036	.221	.119	.036	.213	.116	.035		
5.0	.226	.115	.033	.222	.114	.033	.214	.111	.033	.206	.109	.032	.199	.106	.032		
6.0	.211	.106	.030	.207	.104	.030	.200	.102	.030	.193	.100	.029	.187	.098	.029		
7.0	.196	.097	.028	.193	.096	.027	.187	.094	.027	.181	.093	.027	.175	.091	.027		
8.0	.184	.090	.025	.181	.089	.025	.175	.087	.025	.170	.086	.025	.165	.084	.025		
9.0	.173	.083	.023	.170	.083	.023	.165	.081	.023	.160	.080	.023	.155	.079	.023		
10.0	.162	.078	.022	.160	.077	.022	.155	.076	.021	.151	.075	.021	.147	.074	.021		

pcc	80%			70%			50%			30%			10%			0
pw	50%	30%	10%	50%	30%	10%	50%	30%	10%	50%	30%	10%	50%	30%	10%	0
pfc	20%			20%			20%			20%			20%			0
RCR	RCR:Room Cavity Ratio						Ceiling Cavity Exitance Coefficients (CCEC)									
0.0	.190	.190	.190	.163	.163	.163	.111	.111	.111	.064	.064	.064	.020	.020	.020	
1.0	.179	.156	.136	.153	.134	.117	.105	.092	.081	.060	.053	.047	.019	.017	.015	
2.0	.171	.132	.100	.146	.114	.086	.100	.079	.060	.058	.046	.035	.019	.015	.011	
3.0	.163	.114	.075	.140	.099	.065	.096	.068	.046	.055	.040	.027	.018	.013	.009	
4.0	.155	.101	.059	.133	.087	.051	.092	.061	.036	.053	.036	.021	.017	.012	.007	
5.0	.148	.090	.048	.127	.078	.042	.088	.055	.029	.051	.032	.017	.016	.010	.006	
6.0	.141	.082	.040	.121	.071	.034	.084	.050	.024	.049	.029	.014	.016	.010	.005	
7.0	.135	.075	.034	.116	.065	.029	.080	.046	.021	.046	.027	.012	.015	.009	.004	
8.0	.128	.069	.029	.110	.060	.025	.076	.042	.018	.044	.025	.011	.014	.008	.004	
9.0	.122	.064	.025	.105	.056	.022	.073	.039	.016	.043	.023	.009	.014	.008	.003	
10.0	.117	.060	.023	.101	.052	.020	.070	.037	.014	.041	.022	.008	.013	.007	.003	

H( $\beta$ ) Range:-90 - 90DEG  
H( $\beta$ ) Interval: 1.0DEG  
Test Speed: HIGH  
Temperature:25.3DEG  
Operators:CL  
Test Date:20 March 2020

V(B) Range:-80 - 80DEG  
V(B) Interval: 5.0DEG  
Test System:EVERFINE GO-2000A\_V1 SYSTEM V2.0.366  
Humidity:65.0%  
Test Distance:6.010m [K=1.0000]  
Remarks:

### UGR(Unified Glare Rating) Table

Test:U:120.14V I:1.0036A P:119.21W PF:0.9887 Freq:59.98Hz Lamp Flux:18558.6x1 lm										
NAME: LED Explosion-proof Flood Light					TYPE:Floodlight			WEIGHT:N/A		
SPEC.:120W					DIM.: N/A			SERIAL No.:N/A		
MFR.: NJZ Lighting Technology Co.,Ltd					SUR.:N/A			Shielding Angle:N/A		
ceiling/cavity	0.7	0.7	0.5	0.5	0.3	0.7	0.7	0.5	0.5	0.3
walls	0.5	0.3	0.5	0.3	0.3	0.5	0.3	0.5	0.3	0.3
working plane	0.2	0.2	0.2	0.2	0.2	0.2	0.2	0.2	0.2	0.2
Room dimensions	Viewed crosswise					Viewed endwise				
x = 2H y = 2H	17.0	18.5	17.3	18.7	18.9	16.7	18.2	17.0	18.4	18.6
3H	18.2	19.5	18.5	19.8	20.0	17.7	19.1	18.0	19.4	19.6
4H	18.4	19.8	18.8	20.0	20.3	18.0	19.3	18.3	19.6	19.8
6H	18.5	19.8	18.9	20.0	20.3	18.1	19.3	18.4	19.6	19.8
8H	18.5	19.7	18.9	20.0	20.3	18.0	19.2	18.4	19.5	19.8
12H	18.5	19.6	18.8	19.9	20.2	18.0	19.1	18.3	19.4	19.7
4H 2H	17.5	18.8	17.8	19.0	19.3	17.3	18.6	17.6	18.8	19.1
3H	18.7	19.9	19.1	20.2	20.5	18.4	19.5	18.7	19.8	20.1
4H	19.1	20.1	19.5	20.5	20.8	18.7	19.8	19.1	20.1	20.4
6H	19.2	20.2	19.6	20.5	20.9	18.8	19.8	19.2	20.1	20.5
8H	19.2	20.1	19.7	20.5	20.9	18.8	19.7	19.2	20.0	20.4
12H	19.2	20.0	19.7	20.4	20.8	18.8	19.6	19.2	19.9	20.4
8H 4H	19.2	20.0	19.6	20.4	20.8	18.8	19.7	19.2	20.1	20.4
6H	19.4	20.1	19.8	20.5	20.9	19.0	19.7	19.4	20.1	20.5
8H	19.4	20.0	19.9	20.5	20.9	19.0	19.6	19.4	20.0	20.5
12H	19.4	20.0	19.9	20.4	20.9	19.0	19.5	19.4	19.9	20.4
12H 4H	19.1	19.9	19.6	20.3	20.7	18.8	19.6	19.2	20.0	20.4
6H	19.4	20.0	19.8	20.4	20.9	19.0	19.6	19.4	20.0	20.5
8H	19.4	19.9	19.9	20.4	20.9	19.0	19.5	19.5	20.0	20.4
Variations with the observer position at spacings:										
S = 1.0H	+ 0.2 / - 0.3					+ 0.2 / - 0.3				
1.5H	+ 0.2 / - 0.4					+ 0.2 / - 0.5				
2.0H	+ 0.4 / - 0.5					+ 0.4 / - 0.4				

CIE Pub.117, 18559 lm Total Lamp Luminous Flux Correct (8log(F/F0) = 10.1)

H( $\beta$ ) Range:-90 - 90DEG  
H( $\beta$ ) Interval: 1.0DEG  
Test Speed: HIGH  
Temperature:25.3DEG  
Operators:CL  
Test Date:20 March 2020

V(B) Range:-80 - 80DEG  
V(B) Interval: 5.0DEG  
Test System:EVERFINE GO-2000A\_V1 SYSTEM V2.0.366  
Humidity:65.0%  
Test Distance:6.010m [K=1.0000]  
Remarks:

### UTILIZATION FACTORS TABLE

Test:U:120.14V I:1.0036A P:119.21W PF:0.9887 Freq:59.98Hz Lamp Flux:18558.6x1 lm		
NAME: LED Explosion-proof Flood Light	TYPE:Floodlight	WEIGHT:N/A
SPEC.:120W	DIM.: N/A	SERIAL No.:N/A
MFR.: NJZ Lighting Technology Co.,Ltd	SUR.:N/A	Shielding Angle:N/A

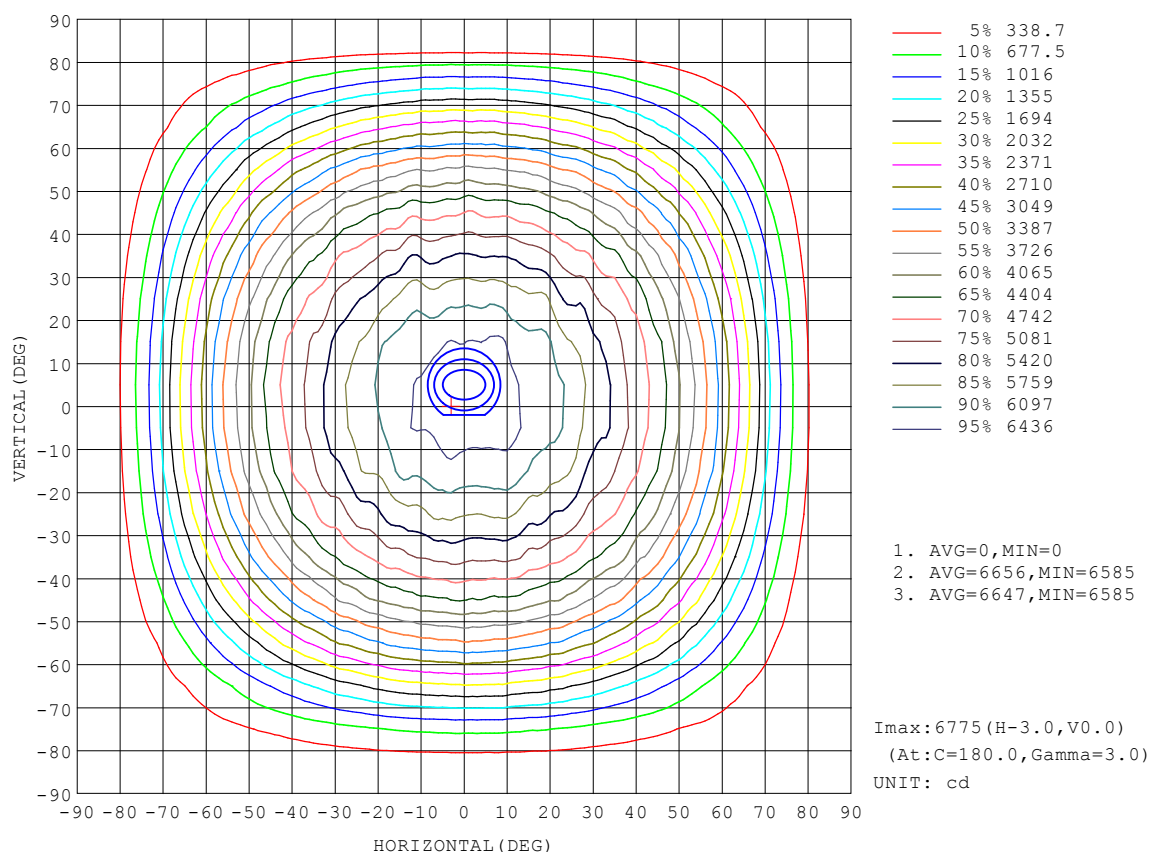
REFLECTANCE										
Ceiling	0.8	0.8	0.8	0.7	0.7	0.7	0.5	0.5	0.5	0
Walls	0.7	0.5	0.3	0.7	0.5	0.3	0.7	0.5	0.3	0
Working plane	0.2	0.2	0.2	0.2	0.2	0.2	0.2	0.2	0.2	0
ROOM INDEX	UTILIZATION FACTORS (PERCENT) $k(RI) \times RCR = 5$									
$k = 0.60$	58	46	39	57	46	39	56	46	39	33
0.80	68	57	50	67	56	49	65	56	49	42
1.00	77	66	59	76	66	59	74	67	58	51
1.25	84	74	67	83	73	67	80	72	66	59
1.50	89	80	73	88	79	72	85	77	71	64
2.00	96	88	82	94	87	81	91	84	79	72
2.50	100	92	87	98	91	86	94	88	84	76
3.00	103	97	91	101	95	90	97	92	88	80
4.00	107	102	97	105	100	96	101	97	93	85
5.00	109	105	101	107	103	99	103	99	96	87
ROOM INDEX	UF(total)									Direct
According to DIN EN 13032-2 2004			Suspended					SHRNOM = 1.25		

$H(\beta)$  Range:-90 - 90DEG  
 $H(\beta)$  Interval: 1.0DEG  
 Test Speed: HIGH  
 Temperature:25.3DEG  
 Operators:CL  
 Test Date:20 March 2020

$V(B)$  Range:-80 - 80DEG  
 $V(B)$  Interval: 5.0DEG  
 Test System:EVERFINE GO-2000A\_V1 SYSTEM V2.0.366  
 Humidity:65.0%  
 Test Distance:6.010m [K=1.0000]  
 Remarks:

# ISOCANDELA DIAGRAM

Test:U:120.14V I:1.0036A P:119.21W PF:0.9887 Freq:59.98Hz Lamp Flux:18558.6x1 lm		
NAME: LED Explosion-proof Flood Light	TYPE:Floodlight	WEIGHT:N/A
SPEC.:120W	DIM.: N/A	SERIAL No.:N/A
MFR.: NJZ Lighting Technology Co.,Ltd	SUR.:N/A	Shielding Angle:N/A



H( $\beta$ ) Range:-90 - 90DEG  
H( $\beta$ ) Interval: 1.0DEG  
Test Speed: HIGH  
Temperature:25.3DEG  
Operators:CL  
Test Date:20 March 2020

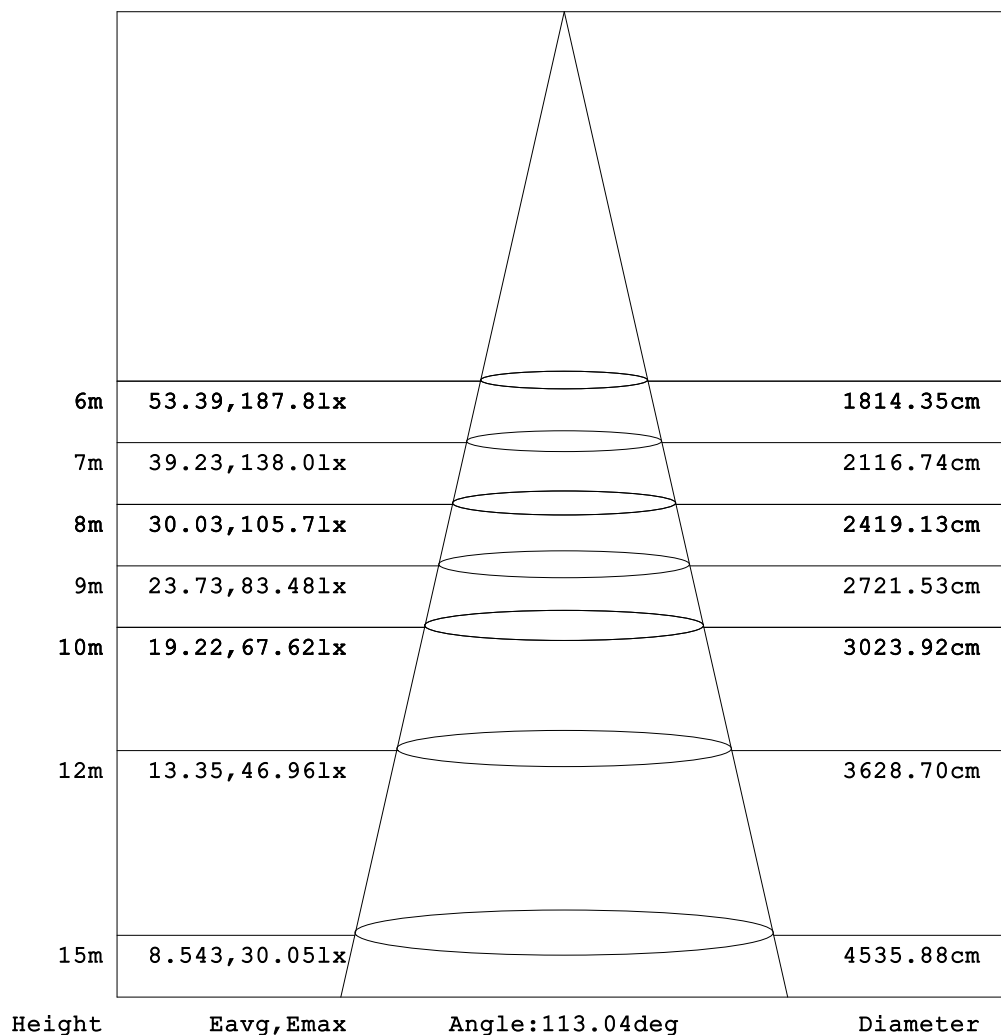
V(B) Range:-80 - 80DEG  
V(B) Interval: 5.0DEG  
Test System:EVERFINE GO-2000A\_V1 SYSTEM V2.0.366  
Humidity:65.0%  
Test Distance:6.010m [K=1.0000]  
Remarks:



### AAI Figure

Test:U:120.14V I:1.0036A P:119.21W PF:0.9887 Freq:59.98Hz Lamp Flux:18558.6x1 lm		
NAME: LED Explosion-proof Flood Light	TYPE:Floodlight	WEIGHT:N/A
SPEC.:120W	DIM.: N/A	SERIAL No.:N/A
MFR.: NJZ Lighting Technology Co.,Ltd	SUR.:N/A	Shielding Angle:N/A

Flux out:14319 lm



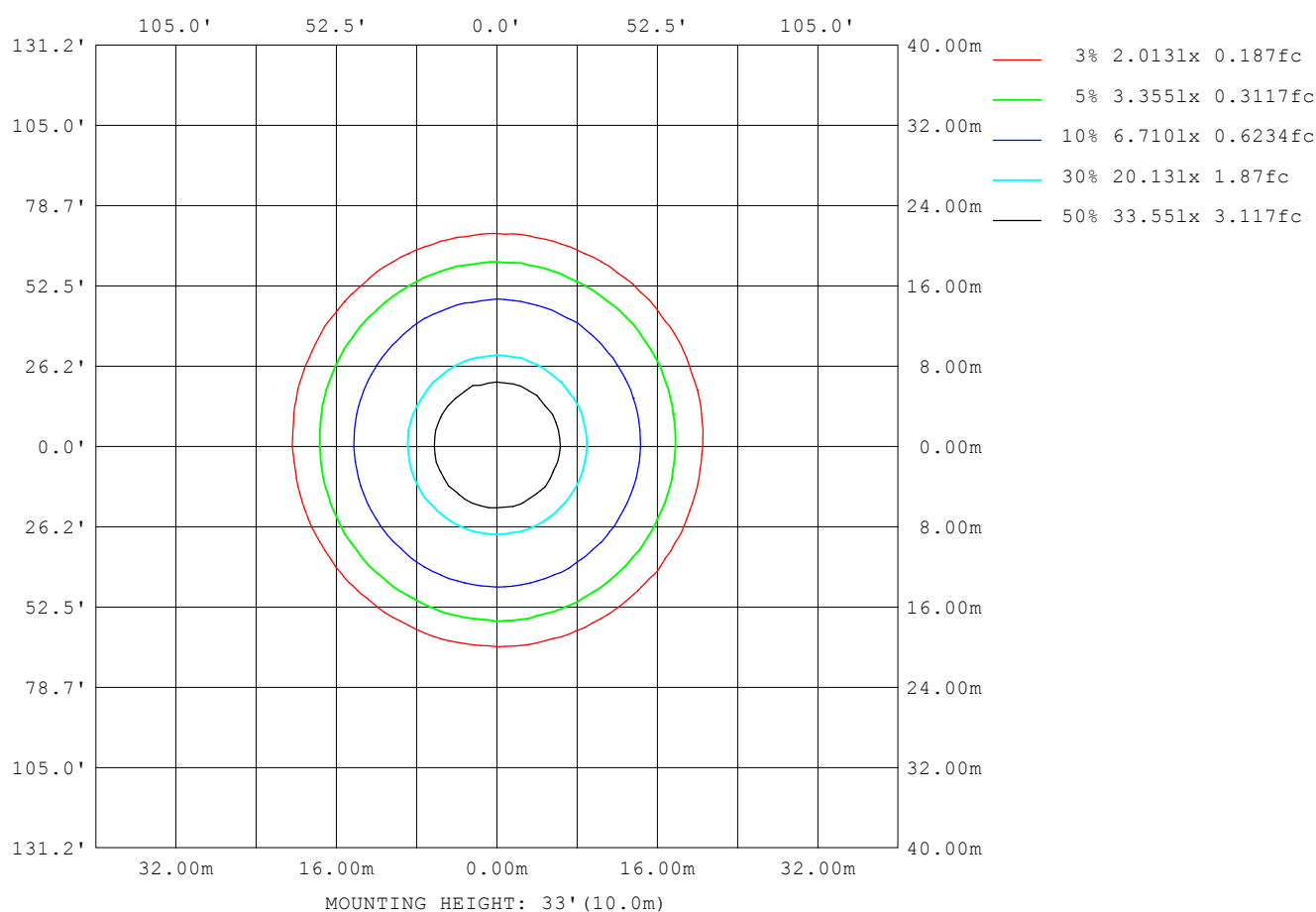
Note:The Curves indicate the illuminated area and the average illumination when the luminaire is at different distance.

H( $\beta$ ) Range:-90 - 90DEG  
H( $\beta$ ) Interval: 1.0DEG  
Test Speed: HIGH  
Temperature:25.3DEG  
Operators:CL  
Test Date:20 March 2020

V(B) Range:-80 - 80DEG  
V(B) Interval: 5.0DEG  
Test System:EVERFINE GO-2000A\_V1 SYSTEM V2.0.366  
Humidity:65.0%  
Test Distance:6.010m [K=1.0000]  
Remarks:

### ISOLUX DIAGRAM

Test:U:120.14V I:1.0036A P:119.21W PF:0.9887 Freq:59.98Hz Lamp Flux:18558.6x1 lm		
NAME: LED Explosion-proof Flood Light	TYPE:Floodlight	WEIGHT:N/A
SPEC.:120W	DIM.: N/A	SERIAL No.:N/A
MFR.: NJZ Lighting Technology Co.,Ltd	SUR.:N/A	Shielding Angle:N/A



H( $\beta$ ) Range:-90 - 90DEG  
H( $\beta$ ) Interval: 1.0DEG  
Test Speed: HIGH  
Temperature:25.3DEG  
Operators:CL  
Test Date:20 March 2020

V(B) Range:-80 - 80DEG  
V(B) Interval: 5.0DEG  
Test System:EVERFINE GO-2000A\_V1 SYSTEM V2.0.366  
Humidity:65.0%  
Test Distance:6.010m [K=1.0000]  
Remarks:

### LED Avg.L Report

Test:U:120.14V I:1.0036A P:119.21W PF:0.9887 Freq:59.98Hz Lamp Flux:18558.6x1 lm		
NAME: LED Explosion-proof Flood Light	TYPE:Floodlight	WEIGHT:N/A
SPEC.:120W	DIM.: N/A	SERIAL No.:N/A
MFR.: NJZ Lighting Technology Co.,Ltd	SUR.:N/A	Shielding Angle:N/A

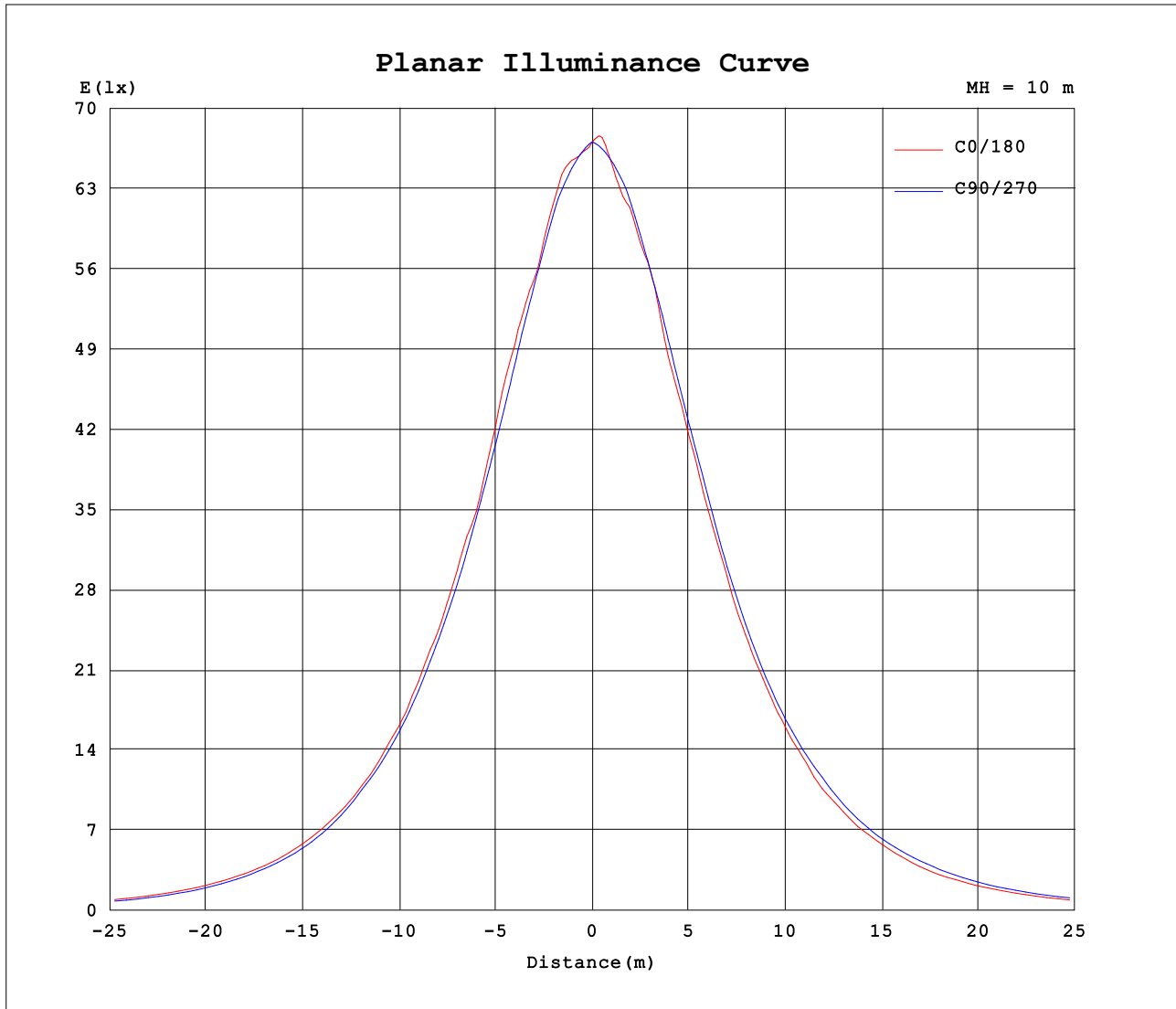
AvgL	cd/m2
L_0~180 (65) av	52673
L_0~180 (75) av	32378
L_0~180 (85) av	17806
L_90~270 (65) av	53858
L_90~270 (75) av	37752
L_90~270 (85) av	0
L_45 (65) av	53583
L_45 (75) av	35024
L_45 (85) av	10160

Standard: GB/T 29293-2012

H( $\beta$ ) Range:-90 - 90DEG  
H( $\beta$ ) Interval: 1.0DEG  
Test Speed: HIGH  
Temperature:25.3DEG  
Operators:CL  
Test Date:20 March 2020

V(B) Range:-80 - 80DEG  
V(B) Interval: 5.0DEG  
Test System:EVERFINE GO-2000A\_V1 SYSTEM V2.0.366  
Humidity:65.0%  
Test Distance:6.010m [K=1.0000]  
Remarks:

### Planar Illuminance Curve



H( $\beta$ ) Range:-90 - 90DEG  
 H( $\beta$ ) Interval: 1.0DEG  
 Test Speed: HIGH  
 Temperature:25.3DEG  
 Operators:CL  
 Test Date:20 March 2020

V(B) Range:-80 - 80DEG  
 V(B) Interval: 5.0DEG  
 Test System:EVERFINE GO-2000A\_V1 SYSTEM V2.0.366  
 Humidity:65.0%  
 Test Distance:6.010m [K=1.0000]  
 Remarks:

## LUMINOUS DISTRIBUTION INTENSITY DATA

Test:U:120.14V I:1.0036A P:119.21W PF:0.9887 Freq:59.98Hz Lamp Flux:18558.6x1 lm		
NAME: LED Explosion-proof Flood Light	TYPE:Floodlight	WEIGHT:N/A
SPEC.:120W	DIM.: N/A	SERIAL No.:N/A
MFR.: NJZ Lighting Technology Co.,Ltd	SUR.:N/A	Shielding Angle:N/A

Table--1

UNIT: cd

[illegible]

H( $\beta$ ) Range:-90 - 90DEG  
H( $\beta$ ) Interval: 1.0DEG  
Test Speed: HIGH  
Temperature:25.3DEG  
Operators:CL  
Test Date:20 March 2020

```
V(B) Range:-80 - 80DEG
V(B) Interval: 5.0DEG
Test System:EVERFINE GO-2000A_V1 SYSTEM V2.0.366
Humidity:65.0%
Test Distance:6.010m [K=1.0000]
Remarks:
```

## LUMINOUS DISTRIBUTION INTENSITY DATA

Test:U:120.14V I:1.0036A P:119.21W PF:0.9887 Freq:59.98Hz Lamp Flux:18558.6x1 lm		
NAME: LED Explosion-proof Flood Light	TYPE:Floodlight	WEIGHT:N/A
SPEC.:120W	DIM.: N/A	SERIAL No.:N/A
MFR.: NJZ Lighting Technology Co.,Ltd	SUR.:N/A	Shielding Angle:N/A

Table--2

UNIT: cd

[illegible]

H( $\beta$ ) Range:-90 - 90DEG  
H( $\beta$ ) Interval: 1.0DEG  
Test Speed: HIGH  
Temperature:25.3DEG  
Operators:CL  
Test Date:20 March 2020

```
V(B) Range:-80 - 80DEG
V(B) Interval: 5.0DEG
Test System:EVERFINE GO-2000A_V1 SYSTEM V2.0.366
Humidity:65.0%
Test Distance:6.010m [K=1.0000]
Remarks:
```

## LUMINOUS DISTRIBUTION INTENSITY DATA

Test:U:120.14V I:1.0036A P:119.21W PF:0.9887 Freq:59.98Hz Lamp Flux:18558.6x1 lm		
NAME: LED Explosion-proof Flood Light	TYPE:Floodlight	WEIGHT:N/A
SPEC.:120W	DIM.: N/A	SERIAL No.:N/A
MFR.: NJZ Lighting Technology Co.,Ltd	SUR.:N/A	Shielding Angle:N/A

Table--3

UNIT: cd

[illegible]

H( $\beta$ ) Range:-90 - 90DEG  
H( $\beta$ ) Interval: 1.0DEG  
Test Speed: HIGH  
Temperature:25.3DEG  
Operators:CL  
Test Date:20 March 2020

```
V(B) Range:-80 - 80DEG
V(B) Interval: 5.0DEG
Test System:EVERFINE GO-2000A_V1 SYSTEM V2.0.366
Humidity:65.0%
Test Distance:6.010m [K=1.0000]
Remarks:
```

## LUMINOUS DISTRIBUTION INTENSITY DATA

Test:U:120.14V I:1.0036A P:119.21W PF:0.9887 Freq:59.98Hz Lamp Flux:18558.6x1 lm		
NAME: LED Explosion-proof Flood Light	TYPE:Floodlight	WEIGHT:N/A
SPEC.:120W	DIM.: N/A	SERIAL No.:N/A
MFR.: NJZ Lighting Technology Co.,Ltd	SUR.:N/A	Shielding Angle:N/A

Table--4

UNIT: cd

[illegible]

H( $\beta$ ) Range:-90 - 90DEG  
H( $\beta$ ) Interval: 1.0DEG  
Test Speed: HIGH  
Temperature:25.3DEG  
Operators:CL  
Test Date:20 March 2020

```
V(B) Range:-80 - 80DEG
V(B) Interval: 5.0DEG
Test System:EVERFINE GO-2000A_V1 SYSTEM V2.0.366
Humidity:65.0%
Test Distance:6.010m [K=1.0000]
Remarks:
```